

January 2021

# Bay Leaves

Photo by Boutique Photographer

## FOUR GENERATIONS OF THE HAGERUP FAMILY



Best Version Media

**The Official Village Weekly E-Newsletter:**

Be the first to know about What's Up at the Village! Subscribe to the free weekly Official Village Online Newsletter: Send your Email address to Tim Blakeslee, Assistant Village Manager, t.blakeslee@wfbvillage.org or subscribe at bit.ly/1U49dmE



**2021 Refuse and Recycling Calendar:**

**Village of Whitefish Bay 2021 Recycling A/B Collection Schedule**



- Refuse Collection occurs weekly. Please have all refuse and recycling to the curb by 7:00 am on pickup day.
- Recycling occurs every other week, according to the following schedule. A-Week Recycling is in Grey. B-Week Recycling is in Blue.
- To determine your route collection day and recycling route, please see the online route map at: <https://www.wfbvillage.org/370/>
- Carts must be placed a minimum of three feet apart from each other, three feet from any obstruction, and three feet or less from the curb.

January							February							March							April						
S	M	T	W	T	F	S	S	M	T	W	T	F	S	S	M	T	W	T	F	S	S	M	T	W	T	F	S
					1	2	31	1	2	3	4	5	6	28	1	2	3	4	5	6	4				1	2	3
3	4	5	6	7	8	9	7	8	9	10	11	12	13	7	8	9	10	11	12	13	11	12	13	14	15	16	17
10	11	12	13	14	15	16	14	15	16	17	18	19	20	14	15	16	17	18	19	20	18	19	20	21	22	23	24
17	18	19	20	21	22	23	21	22	23	24	25	26	27	21	22	23	24	25	26	27	25	26	27	28	29	30	1
24	25	26	27	28	29	30								28	29	30	31										

May							June							July							August								
S	M	T	W	T	F	S	S	M	T	W	T	F	S	S	M	T	W	T	F	S	S	M	T	W	T	F	S		
2	3	4	5	6	7	8	6	1	2	3	4	5	4				1	2	3	1	2	3	4	5	6	7			
9	10	11	12	13	14	15	13	6	7	8	9	10	11	12	11	4	5	6	7	8	9	10	8	9	10	11	12	13	14
16	17	18	19	20	21	22	20	13	14	15	16	17	18	19	18	11	12	13	14	15	16	17	15	16	17	18	19	20	21
23	24	25	26	27	28	29	27	20	21	22	23	24	25	26	25	18	19	20	21	22	23	24	22	23	24	25	26	27	28
30	31							27	28	29	30			29	25	26	27	28	29	30	31	29	30	31					

September							October							November							December						
S	M	T	W	T	F	S	S	M	T	W	T	F	S	S	M	T	W	T	F	S	S	M	T	W	T	F	S
5	6	7	8	9	10	11	3	4	5	6	7	8	9	31	1	2	3	4	5	6	5	6	7	8	9	10	11
12	13	14	15	16	17	18	10	11	12	13	14	15	16	7	8	9	10	11	12	13	12	13	14	15	16	17	18
19	20	21	22	23	24	25	17	18	19	20	21	22	23	14	15	16	17	18	19	20	19	20	21	22	23	24	25
26	27	28	29	30			24	25	26	27	28	29	30	21	22	23	24	25	26	27	26	27	28	29	30	31	1

**Holiday Collection Schedule**

- Friday, January 1, 2021 will be picked up on Thursday, December 31, 2020
- Friday, April 2, 2021 will be picked up on Thursday, April 1, 2021
- Monday, May 31, 2021 will be picked up on Tuesday, June 1, 2021
- Monday, July 5, 2021 will be picked up on Tuesday, July 6, 2021
- Monday, September 6, 2021 will be picked up on Tuesday, September 7, 2021
- Thursday, November 25, 2021 will be picked up on Tuesday, November 23, 2021
- Friday, November 26, 2021 will be picked up on Wednesday, November 24, 2021
- Thursday, December 23, 2021 will be picked up on Tuesday, December 21, 2021
- Friday, December 24, 2021 will be picked up on Wednesday, December 22, 2021

**#1** Buying or Selling this Spring?  
Milwaukee's #1 New Local Brokerage!

**CORCORAN REALTY & CO.** (414) 214-0335  
CorcoranRealtyCo.com

**H F HOLY FAMILY**  
DREAM | BELIEVE | ACHIEVE | LEAD

Now accepting registrations for the 21-22 school year.

Grades K3-Grade 8

4849 N. Wildwood Ave. Whitefish Bay  
414.332.8175 | www.hfparishschool.org

ADMISSIONS/TOURS: 414.332.8175, ext. 134  
brienzak@hfparishschool.org

**BVM Best Version Media**  
"Bringing People Together!"



**Publishers:** Christa Banholzer and Kathy Durand  
**BayLeaves Project Coordinator:** Beth Raab

**PUBLICATION TEAM**  
**Content Coordinator:** Christine McBride  
**Designer:** Laura Wire  
**Contributing Photographer:** Boutique Photographer

**ADVERTISING**  
Interested in advertising in any of the following Wisconsin communities? Appleton/Neenah, Bayside, Bay View, Brookfield, Cedarburg, Delafield, Fond du Lac, Fox Point, Franklin, Germantown, Grafton, Green Bay, Hartland, Madison Area, Menomonee Falls, Mequon, New Berlin, North Point, Oak Creek, Oconomowoc, Oshkosh, Pewaukee, Racine, River Hills, Waukesha, Wausau, Wauwatosa .

**Contact:** Kathy Durand at (262) 716 4788, or kdurand@bestversionmedia.com and Christa Banholzer at cbanholzer@bestversionmedia.com

**FEEDBACK/IDEAS/SUBMISSIONS**  
Have feedback, ideas or submissions? We are always happy to hear from you! Deadlines for submissions are the 20th of each month. You may also email your thoughts, ideas and photos to Christine McBride at cmcbride@bestversionmedia.com

**CONTENT SUBMISSION DEADLINES**

Content Due	Edition Date
December 20	February
January 20	March
February 20	April
March 20	May
April 20	June
May 20	July
June 20	August
July 20	September
August 20	October
September 20	November
October 20	December
November 20	January

**IMPORTANT PHONE NUMBERS**

Emergency	911
Police Administration	(414) 962-3830
Police (non-emergency)	(414) 351-9900
North Shore Fire Dept. (non-emergency)	(414) 357-0113
Village Hall	(414) 962-6690
Public Library	(414) 964-4380
Dept. of Recreation & Community Education	(414) 963-3947
Whitefish Bay School District	(414) 963-3921

Any content, resident submissions, guest columns, advertisements and advertorials are not necessarily endorsed by or represent the views of Best Version Media (BVM) or any municipality, homeowners associations, businesses or organizations that this publication serves. BVM is not responsible for the reliability, suitability or timeliness of any content submitted. All content submitted is done so at the sole discretion of the submitting party. ©2021 Best Version Media. All rights reserved.

**DEAR RESIDENTS,**

This past year has been a whirlwind for everyone. One positive though, is that the number of residents taking daily walks has greatly increased. For almost two decades I've had the same running partner. When we first began running together we were single and living downtown. Now we are both married and living in the North Shore, so our running route typically goes along Lake Drive. For years we've had the pleasure of running past our feature resident, Eric Hagerup. He always brings a smile to my face when he says lines like, "Come on ladies, pick up the pace" as we run past him.

Enjoy reading the story of the Hagerup family that spans four generations all currently living in Whitefish Bay. I know I look forward to many runs past him in 2021.



My running partner and I after finishing one of many races together!



**HAPPY NEW YEAR!**

Christine McBride



VILLAGE OF WHITEFISH BAY WISCONSIN

**Julie Siegel, Village President** | Bay Leaves is mailed directly to your home through the courtesy of our advertisers at no cost to you or the Village of Whitefish Bay. We encourage you to thank them with your support.

**EXPERT CONTRIBUTORS**

**ROGERS Behavioral Health** HEALTH AND WELLNESS  
**BEHAVIORAL HEALTH EXPERT**  
Rogers Behavioral Health  
800.767.4411  
<https://rogersbh.org>



**REAL ESTATE**  
**ESSAM ELSAFY**  
Shorewest Realtors®  
(414) 350.4611  
elsafy@shorewest.com

To learn more about becoming an expert contributor, contact **KATHY DURAND** at (262) 716 4788 and **KATHY DURAND** at kdurand@bestversionmedia.com, or **CHRISTA BANHOLZER** at cbanholzer@bestversionmedia.com

# FOUR GENERATIONS

OF THE HAGERUP FAMILY

There are a few iconic things that come to mind when most people think of Whitefish Bay. The Great Pumpkin Festival, the quintessential Fourth of July festivities and the sight of Eric Hagerup walking his shih tzu dog, *Ferbie*, while smoking a cigar along Lake

Drive. Through his funny jokes or encouraging words to runners, many Whitefish Bay residents have had the pleasure of becoming an acquaintance of Colonel Eric Hagerup, or as he is simply referred to, "The Colonel." In Whitefish Bay it is common for adult children who were raised here to move

back once they have begun their own families. Luckily for the Hagerup family, they have four generations all living in Whitefish Bay. This has fostered a special bond between the great-grandchildren and their great-grandparents.



## FIRST GENERATION

**ERIC AND ELIZABETH HAGERUP** met as teenagers in the summer of 1954 in Dodgeville, Wisconsin, and it was love at first sight. They both went to UW-Madison for undergrad and upon graduation, Eric attended law school while Elizabeth, with her striking good looks, worked as a professional model. They moved to Whitefish Bay in the 1960s to raise their two young sons, Christopher and Stefan. Both boys attended the Whitefish Bay public schools and graduated from the high school.

In the 1980s Eric and Elizabeth relocated to Los Angeles and shortly thereafter to Baltimore. After living away from Wisconsin for over twenty years, when it came time to retire, all of their friends from the East Coast were moving to Florida. That lifestyle didn't appeal to Eric and Elizabeth, who had maintained great friendships with couples from Whitefish Bay that they had raised their sons alongside with decades ago. In 2007 they decided to move back to Whitefish Bay and bought a house on Hampton, the same street where they had raised their sons.

"People always say that my grandparents look like a walking Ralph Lauren ad. I think we'd all like to replicate that secret recipe for feeling young, looking good and having a loving marriage that's lasted over 60 years," said Ingrid Davis.

## SECOND GENERATION

**CHRIS AND LONI HAGERUP** first met while in grade school at Richards in the 1960s. Loni grew up on Berkeley Boulevard where her mother, Luan Laev, insisted they live because Luan wanted her family to have the Whitefish Bay childhood experience. Luan and her husband David Delahunt, both had grown up in Whitefish Bay in the 1930s and had graduated from Whitefish Bay High School.

"I'm very thankful to my mother for insisting that we were raised in Whitefish Bay, it was a magical place to grow up," Loni said. "For years Chris and I were just great friends, even though in third grade our teacher would always put our desks next to each other because she thought we were a 'cute couple'. Ironically decades later, that teacher's son ended up being our son Will's soccer coach, so we were able to share that we did indeed end up together."

The couple started to date in college when they both were attending UW-Madison. After Chris finished law school they moved to Washington D.C. where they both worked in the political world. Their three children, Ingrid, Christopher and Will were all born in D.C. and that was when Loni had the desire to move back to Whitefish Bay.

"After a decade living out East, it was time to come home and raise our family here," said Loni. "The advantage of us both being from here was that one of us didn't have to convince the other one to leave. We were both excited for life back in the Bay."

In 1995 they relocated to Whitefish Bay buying an old farmhouse built in 1893. "I realize that I sound like Pollyanna saying this, but truly the honeymoon phase of moving back here has never ended, even 25 years later," said Loni while smiling. "Our old house might have its quirks, but I tell all our friends that living here is like living in Mayberry and we just love it."



## THIRD GENERATION

In classic Whitefish Bay style, **ANDREW AND INGRID DAVIS** first met at the Fourth of July parade in 2008. While working for a political candidate, Andrew had done some projects with Loni, Ingrid's mom. Over a few months Loni had mentioned what a great guy Andrew was to Ingrid. However it wasn't until the parade when Andrew was walking in it, that a quick introduction happened and sparks flew.

After dating for a few years the couple wed in 2014, of course over the Fourth of July holiday weekend. They are currently enjoying growing their careers and family, with three kids Trygg (4), Augusta (3) and Beau (1). It was the sense of community and family bonds that pushed them into purchasing a house in Whitefish Bay.

"While I grew up here and knew all the things that make it so special, Andrew was able to form his own opinion from years of us attending events here. It comes down to being close to family, our wonderful friends, community celebrations and the walkability of living here," Ingrid said.

**Our Expansion is Now Open!**

Spectacular apartment homes still available.

LOOKING BACK ON 150 YEARS OF LOOKING FORWARD

**SAINT JOHN'S**  
ON THE LAKE

*"We absolutely love our new Kingston apartment in Saint John's North Tower. Scan the code below to join us on a tour!"*

— Alison Graf & Richard Schreiner  
Saint John's Residents

Scan this code with the camera on your phone to tour Alison & Richard's apartment!

SCAN ME

414-831-7300 · [www.SaintJohnsMilw.org](http://www.SaintJohnsMilw.org) · 1840 North Prospect Avenue · Milwaukee, WI 53202

**SHOWPLACE**  
CABINETRY

**YOUR CABINETRY**  
DESIGN BEGINS HERE...

**ZUEREN**  
BUILDING PRODUCTS & DESIGN CENTER

[www.zuerns.com](http://www.zuerns.com)

Allenton | Cedarburg | Franklin | Watertown

Our Design Team will provide experience, fresh ideas, and budget friendly options for your Showplace cabinetry project.

## FOURTH GENERATION

While they are too young to own their own houses in Whitefish Bay, the three children of Andrew and Ingrid Davis (**TRYGG, AUGUSTA AND BEAU**) have a special bond with both their grandparents and great-grandparents. Their first born, Tryggve, is named after great-grandfather Eric, whose full name is Tryggve Eric Hagerup. Augusta is always seen running after one of the family dogs, and while Beau is only one, there is a striking comparison between him and Eric.

"It's very special to me that my children will be attending the same high school that their great grandparents, grandparents, great uncle, uncles and myself all graduated from," said Ingrid.



The whole family prioritizes a weekly Sunday brunch together. Holidays welcome additional family members at the table—Chris and Loni's other children Will, wife Claire and son William Mac, who live in Chicago, along with their son Christopher, Jr. and fiancé Tova, who live in New York.

While strolling down Lake Drive, be on the lookout for clouds of cigar smoke and you might just get a friendly wave from the legendary Eric Hagerup.

BY CHRISTINE MCBRIDE | PHOTOS BY BOUTIQUE PHOTOGRAPHER



## How To Tell The Difference Between SEASONAL AFFECTIVE DISORDER AND DEPRESSION

The winter blues, winter funk, winter depression, seasonal affective disorder—it's known by many names and whatever you call it, it can be debilitating. Often known to the public as SAD, this is one of the most common subsets of depression. Natalie Scanlon, PhD, clinical supervisor of Rogers Behavioral Health's Focus Depression Recovery adult residential care, explains the differences between SAD and depression.

### What is seasonal affective disorder?

Under the current diagnostic guidelines, SAD is no longer listed as a standalone mood disorder. Instead it's defined as a subset of depressive disorders with a seasonal pattern where someone experiences greater and lesser symptoms of a depressive disorder.

Dr. Scanlon says major depressive disorder (MDD) with a seasonal pattern is more common in higher latitudes with greater seasonal changes. Additionally, winter depressive episodes are more common in younger people.

### What is the difference between SAD and depression?

When distinguishing between depression and depression with a seasonal pattern, it all comes down to timing. Dr. Scanlon says that the symptoms for both are likely very similar or even identical.

"A person suffering from major depressive disorder with seasonal pattern experiences common symptoms like depressed mood, weight gain (appetite increase and a specific craving for carbohydrates are common in winter months), excessive sleep or drowsiness, and loss of interest in things previously enjoyed. They may experience hopelessness and even suicidality in fall and winter months."

For someone to be diagnosed with depression with seasonal pattern, they would have to experience at least two years of symptoms that become worse during a specific time of the year, with seasonal depressive episodes significantly outweighing the nonseasonal episodes.

### Is SAD treated differently than regular depression?

Dr. Scanlon says treatment for MDD and MDD with seasonal pattern usually require the same approach. Therapy and anti-depressant medications are commonly prescribed for someone with depression, whether seasonal or not.

"We recommend using evidence-based treatments with research to back their effectiveness," Dr. Scanlon adds. "At Rogers, we utilize cognitive behavioral therapy, behavioral activation and mindfulness."

Likewise, someone with MDD with seasonal pattern may or may not require a more intensive approach to treatment, but Dr. Scanlon says people shouldn't try to wait out the depressive episode if it's seasonal.

"The mentality that someone can just endure the depressive episode means that they may have a period of several weeks or months of being quite functionally impaired and struggling with difficult emotions alone," she explains. "The sooner they get professional help, the sooner they can return to a more fulfilling and enjoyable life."

Rogers provides evidence-based treatment throughout Wisconsin and nationwide for children, teens and adults. For more information call 1-800-767-4411 for a free screening or request a screening online.

BY ROGERS BEHAVIORAL HEALTH

## HERE TO PROTECT YOUR TODAY. HERE TO PROTECT YOUR TOMORROW.

Protecting the things you've worked hard for today is an important step towards making your dreams for the future your reality. Let's talk about your future plans, and how I can help you protect them.



**Mandi Gramoll Lococo, Agent**  
Gramoll & Associates Inc  
4484 N Oakland Ave, Shorewood  
Bus: (414) 332-0838  
gramollassociates.com



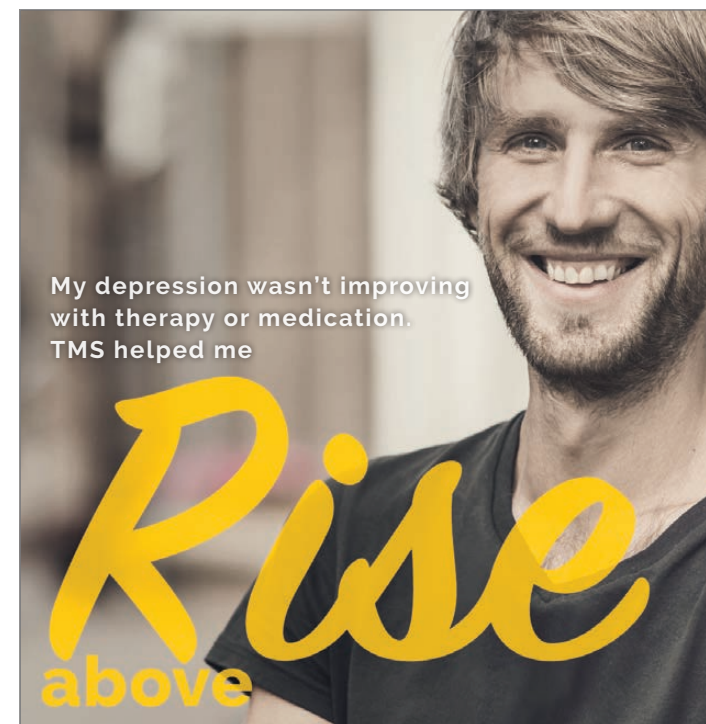
**Andrea Liegl, Agency Branch Manager**  
Gramoll & Associates Inc  
Bus: (414) 332-0838  
alieg@amfam.com



**Deana Volpe, Sales Specialist - All Lines**  
Gramoll & Associates Inc  
Bus: (414) 332-0838  
dvolpe@amfam.com



American Family Mutual Insurance Company, S.I. & its Operating Companies, American Family Insurance Company, 6000 American Parkway, Madison, WI 53783 011780 - Rev. 6/18 ©2016 - 12186431



When you are suffering from depression that's been resistant to medications or traditional therapy, Transcranial Magnetic Stimulation (TMS) may be the solution. Contact Rogers Behavioral Health to learn more.

rogersbh.org 800-767-4411





**HAPPY 100<sup>TH</sup> BIRTHDAY**

to

*Jeanne (Sweet) Gaenslen*



Local resident Mrs. Gaenslen celebrated her 100th birthday on December 22. She still lives in the home that she and her late husband, Fred Gaenslen, built on Berkeley Boulevard in Whitefish Bay. A resident since 1946, Jeanne (and Fred) had five children—Fritz, Christine, Heidi, Barbara and Eric. She also has a special relationship with Eddie, who calls her “Mom”. In addition to her eight grandchildren there are a dozen more who call her “Grandma”.

A lover of children, books, poetry, her church and a handwritten letter, Jeanne lives a wonderful life and thoroughly enjoys sharing her stories and imparting her abundant wisdom to friends—both old and new.

According to her family, “Jeanne is the essence of grace. Anyone who has the opportunity to sit for a conversation with her will come away with a message of hope from a phenomenal woman.”

BY KITTY GAENSLER



**WELCOME, 2021!** We hope you enjoyed staying “Home for the Holidays” with the Merchants of Whitefish Bay, and were able to join us for some of our favorite local holiday traditions, including the Menorah and Christmas tree lightings, visits with Santa, and the Ice Sculpture Crawl, hosted by 15 different merchants. We also hope you took advantage of new festive features, like the “Letters to Santa” mailbox on Silver Spring Drive. We appreciate all who shopped locally this holiday season, and want to extend a special thanks to those who entered our “Shop the Bay Giveaway.” Congrats to the four winners who each received a \$50 gift certificate to spend in any of the merchants on Silver Spring Drive!

In the New Year, the Merchants of Whitefish Bay, a focused group of business owners, residents and champions of the Whitefish Bay Business Improvement District, will continue to work toward growing a safe, sustainable, and vibrant downtown area by improving and promoting the local businesses, events and camaraderie that sets our community apart. This past year was certainly like no other, and, as local businesses reopened their doors, all have worked hard to provide customers with safe and enjoyable experiences. As you make your new year’s resolutions, we hope you’ll include shopping locally on your list! You are a key part in keeping our

downtown shopping district vibrant and helping small businesses thrive.

Keep up with your amazing local businesses and so much more through regular emails from the shopping district or by visiting [www.merchantsofwhitefishbay.com](http://www.merchantsofwhitefishbay.com). Each month on our website, we **HIGHLIGHT** a different Whitefish Bay business. You can also find us on Facebook, @ShopWFB, and Instagram, @WFBBID.



BY KATIE COMMER

**ANANDA CITTA**  
SPIRITUAL CARE FOR PEOPLE AND PETS

Animal Communication Sessions  
Intuitive Readings  
Reiki

Schedule Your Appointment Today!

Michelle Boening  
414.690.1443

412 E Silver Spring Dr, Suite 103  
[michelle@acspiritualcare.com](mailto:michelle@acspiritualcare.com)  
[www.acspiritualcare.com](http://www.acspiritualcare.com)

**DeLeers**  
CONSTRUCTION, INC.

Call us today to find out about how DeLeers Service Division can help with your small project, remodel, miscellaneous repairs, maintenance, and more.

6969 N. Pl. Washington Rd., Ste. B115, Glendale, WI 53217  
414.446.9305 | [deleers.com](http://deleers.com)

7 DAY *free trial*

PERSONAL TRAINING  
*In a Group Setting*

COMPLIMENTARY  
*Childwatch*

PERSONALIZED  
*Nutrition & Education*

UNLIMITED  
*45 Minute Camps*

A COMMUNITY  
*Based on Strength & Empowerment*

sign up:  
[burnbootcamp.com/whitefish-bay-wi](http://burnbootcamp.com/whitefish-bay-wi)

@burnbootcampwfb  
Burn Boot Camp - Whitefish Bay  
whitefishbaywi@burnbootcamp.com

415 E Silver Spring Drive  
Whitefish Bay, WI 53217  
414.800.4800

*New Year New Home*

**TARPEY FRANZ TEAM**

Wishing you a prosperous year filled with much good health, joy, love and laughter. If you are contemplating a move this year, contact us today!

ShoreWEST REALTORS | **ELSAFY REAL ESTATE TEAM**

DAWN TARPEY | 414.426.8556  
GAYL FRANZ | 414.403.3600

[tarpeyfranzteam.shorewest.com](http://tarpeyfranzteam.shorewest.com)



**SCHOOL DISTRICT**

**Save the Date!**

- ▶ No School for Students – January 18, 2021
- ▶ First Semester Ends – January 22, 2021
- ▶ No School for Students – January 25, 2021

**Community E-Newsletter**

Our Community Newsletters are one of several ways the District works toward comprehensive communications with the community. If you would like to receive these monthly during the school year, please visit [www.wfbschools.com](http://www.wfbschools.com) to sign up.



**BYMCKENNA SHAFFER - EXECUTIVE ASSISTANT TO THE DISTRICT ADMINISTRATOR & THE BOARD OF EDUCATION**



**SHARE YOUR STORIES**

Do you know any local student athletes, coaches or teams who deserve some recognition? Tell us why! Visit our website to submit your articles and videos so we can feature the go-getters and MVPs in your neighborhood.



**SUBMIT YOUR STORY TODAY!**

**BVM SPORTS: ONE PLACE. ALL SPORTS.**



DOWNLOAD THE **BVM SPORTS APP** ON YOUR MOBILE DEVICE

▶ JOIN US ON SOCIAL MEDIA



For years, Milwaukee trusted me to keep people prepared. Today, I trust Senior Helpers to do the same.

*John Malan, Milwaukee Meteorologist*

QUALITY IN-HOME CARE FOR YOUR LOVED ONE  
PEACE OF MIND FOR YOU

Call **TODAY** for your **FREE** assessment!  
414-485-9750 | 262-288-9930

**Senior Helpers**  
Care and comfort at a moment's notice.  
SeniorHelpers.com/Milwaukee

**Senior Helpers services include:**

- ✓ 24/7 Availability
- ✓ Compassionate & Reliable Service
- ✓ Housekeeping & Medication Reminders
- ✓ Meal Preparation & Nutrition
- ✓ Shopping & Errands
- ✓ Personal Care Support
- ✓ Senior Gems® Alzheimer's & Dementia Care
- ✓ Staying Home Safe™ Plan



Shopping Days Still Left to Give the Gift of History



**BAY VIEW BARK**

DAY CARE  
OVERNIGHT CARE  
with curbside Drop Off and Pick Up  
TRAINING CLASSES

1820 S. 1st St. Mke, WI 53204 • 414.763.1304 • bayviewbark.com

Whenever you celebrate your holiday traditions this season, there are still several shopping days to give the gift of history—and you can purchase it without leaving your hometown.

The Whitefish Bay Library offers three popular books recounting the remarkable story of the Bay: "Images of Whitefish Bay," "Chronicles of Whitefish Bay" and "Historic Whitefish Bay." Each book is available for \$20. The three-volume set can be purchased for \$50. All proceeds go to the library. The books are also available at Winkie's, Village Ace Hardware and other local retailers.

Your friends and family who enjoy history and love Whitefish Bay will treasure these books. Get one—or all three—today. There's still time.

BY JEFF AIKIN AND TOM FEHRING

REMODEL. REPLACE. RETHINK YOUR WINDOWS.

**MARVIN**

Bliffert Lumber offers quality products from Marvin.  
Call or visit us today to learn more.

**HARDWARE HOURS**  
Mon-Fri 7am-7pm Sat 8am-6pm Sun 9am-5pm

**LUMBER HOURS**  
Mon-Fri 7am-5pm Sat 8am-12pm Sun CLOSED

**Bliffert LUMBER & HARDWARE WISCONSIN** est. 1904

1014 E. CHAMBERS ST, MILWAUKEE • 414-264-5700 • WWW.BLIFFERTLUMBER.COM

# State Street Painting

Jim Devine Owner  
414.405.8321

Residential • Commercial  
Interior • Exterior



**Josh Does It All**

"ENJOY YOUR HOME,  
DON'T WORK FOR IT!"

Fall cleanups/Yard Work  
Gutter cleaning  
Interior painting  
Upholstery/carpet cleaning  
Window cleaning  
And more!

Insured & Bonded

920.312.1671  
JOSHDOESITALL.COM

## 2021 PROPERTY TAX INFORMATION AND FAQs

### WHEN IS MY TAX BILL DUE?

Due date is January 31, 2021

An installment payment option is available. There is no need to sign up for the installment option, but payments must be made timely. If any installment payment is missed, the installment option is no longer available and the entire balance becomes due in full. Installment payments of taxes and other charges as indicated on your tax bill are due as follows:

- ▶ **1st Installment** due by January 31 (January 31 is a Sunday—please plan accordingly.)
- ▶ **2nd Installment** due by March 31
- ▶ **Final Installment** due by May 31 (May 31 is a Village Holiday—please plan accordingly.)



### HOW DO I MAKE A PAYMENT?

- ▶ **By Mail**
  - ▷ Make check payable to the Village of Whitefish Bay
  - ▷ Send check to Village of Whitefish Bay, 5300 N. Marlborough Drive, Whitefish Bay, WI 53217
- ▶ **On the Village Website, www.wfbvillage.org**
  - ▷ From website, click "Online Payments" on bottom of page
  - ▷ User Fees Do Apply:
    - » Credit/Debit Cards – 2.39% per Transaction, \$1.50 minimum
    - » Electronic Check – \$1.50
- ▶ **Village Hall 24-Hour Night Depository**
  - ▷ Located in entrance of Village Hall
  - ▷ Deposits made prior to midnight will be processed using that day's date
  - ▷ **Please note:** Associated Bank will be doing no tax collections this year.
  - ▷ **Before you visit or drop off** payment at Village Hall, be sure to check the Village website, at wfbvillage.org, for updates on unexpected closures due to COVID-19.



### HOW DO I OBTAIN A RECEIPT?

Receipts can be obtained in one of three ways:

- ▶ Use the Village website, www.wfbvillage.org; receipts may be printed anytime at your convenience
- ▶ Include a self-addressed stamped envelope with payment sent via mail or night deposit box
- ▶ Receipts will not be sent if self-addressed stamped envelope is not included
- ▶ Receive receipt at time of payment in person

### WHAT HAPPENS IF I DO NOT PAY ON TIME?

For any property tax bill where payment is not made timely, the bill is considered delinquent and the remaining balance is subject to interest and penalty. When paying in installments, if a payment is missed, the installment plan is no longer available and the balance is due in full. Pursuant to Wisconsin State Statutes and Village of Whitefish Bay Municipal Code, delinquent property tax bills are charged 1.5% interest and penalty per month (in the calculation of interest and penalty, a partial month is considered a full month). Interest and penalty are charged retroactive to February 1, 2021.

### IMPORTANT INFORMATION FROM PUBLIC WORKS.

#### Holiday Refuse and Recycling Collection Dates:

Refuse/Recycling normally picked up on Thursday, December 24, 2020, will be picked up on **Tuesday, December 22, 2020.**

Refuse/Recycling normally picked up on Friday, December 25, 2020, will be picked up on **Wednesday, December 23, 2020.**

Refuse/Recycling normally picked up on Friday, January 1, 2021, will be picked up on **Thursday, December 31, 2020.**

#### Christmas Tree Pick-Up

Village crews will collect Christmas trees once a week curbside starting the week of January 4, 2021. Please place trees on your parkway, the area between the public sidewalk and curb. There is no scheduled pick-up date for tree collection. Please have tree(s) on the parkway by 7 a.m. on Monday morning to ensure tree(s) are collected that week. Christmas tree pick-up ends the week of January 25, 2021.

LINDSEY VEBBER  
associate broker  
414-334-0470  
Lvebber@kw.com



FERNWOOD  
real estate  
KELLERWILLIAMS

HONEST INTELLIGENT CARING

NEW CLIENT SPECIAL  
**50% OFF EXAM FEE**

Mention code Bay50 when making appointment. Offer valid for a limited time.



80 YEARS OF COMMON SENSE VETERINARY MEDICINE

Lakeside ANIMAL HOSPITAL

We're about pets and their people!

211 W. Bender Road, Milwaukee, WI 53217  
414-962-8040 | www.lakesideanimalhospital.biz




**BrightStar Care**  
HOME CARE | MEDICAL STAFFING  
A Higher Standard

BrightStar Care of  
Central & South Milwaukee  
414-944-0280

Learn more at  
brightstarcare.com/central-milwaukee.

©BrightStar Care. Independently Owned and Operated

In-home care with nurse supervision.

When your loved one needs extra care at home, choosing the right caregiver agency can be tough. Let BrightStar Care® make it easier.

- Companion, personal & skilled care
- No minimum hours
- Bathing, dressing, grooming, toileting
- Specially trained caregivers
- Fully screened, bonded & insured
- Respite care & family relief

ILLARY COUNSELING  
Milwaukee Psychotherapy for Adolescents & Adults



A modern approach to therapy

414-333-9969 | lisa@hillarycounseling.com | hillarycounseling.com

Live a life you love



**BENCHMARK**  
HANDYMAN & LAWN SERVICES LLC.  
414.614.0237

KITCHEN, BATH, OR BASEMENT REMODEL

VISIT BENCHMARKMILW.COM

## SNOW AND ICE CONTROL INFO

### Village Snow Procedures:

Village crews clear all streets, starting with main thoroughfares, next proceed to streets adjacent to schools, then clear residential streets and alleys. Sidewalks that abut village-owned land, such as parks and government buildings, are also cleared. At times a liquid anti-icing agent is applied to streets prior to a snow event to prevent ice from bonding to the pavement.



### Resident Snow and Ice Removal:

All residents and business owners are responsible for snow and ice removal from public sidewalks adjacent to their properties within 24 hours of a snow event. Please clear all corners with crosswalks; handicap accessible ramps should be cleared out enough to accommodate a wheel chair.

Placing snow on property other than your own is not a legal practice. It is against Village Ordinance to push, pile, blow or shovel snow into and across the Public Street and alley. Please remind your contractors of this rule. Machine noise by private citizens or contractor is prohibited between 10 p.m. and 6 a.m. Please be considerate of neighbors when clearing snow.

With the automated refuse and recycling program, collection carts continue to be required to be placed within three feet of the curb or alley edge and three feet away from any obstruction. Residents may use carriage walks and driveway approaches or shovel a portion of their parkway to provide adequate space for collection carts. Residents with an alley are required to shovel out and clear the top of their carts to ensure collectors have access to the carts. Village Public Works collectors may not be able to collect carts if they have not been shoveled out and cleared off.

Fire hydrants should be shoveled out in a three-foot radius to allow access in the case of a fire. Residents whose property has an adjacent bus stop with concrete are requested to keep that area clear and free of ice to allow for bus patrons to safely get on and off the buses. Your assistance with all of these above matters is greatly appreciated.

## FROM *Faye's* FASHION FILES

### YOUR CLOSET DURING COVID *The Pandemic Effect*

Our lives and lifestyles have changed in ways we could've never imagined.

We've perfected Waist-Up-Dressing for ZOOM meetings, learning that a statement necklace or string of pearls inside the neckline of a blouse looks boardroom-ready.

But, speaking from my own experience, I became lonesome for my closet. I'd look through my jacket "collection" and admire my pretty blouses. I began to pull out things that I'd always considered my "school clothes" and wearing them to make my evening cocktail feel more special. To sit at my computer, I'd throw a colorful cashmere sweater over my workout black t-shirt.

I began to see a different way to match tops and bottoms: "WOW! Love this green print shirt with that grey bottom!"

I needed to cheer myself up, and fashion has always been a creative outlet. I have the time to "play with my clothes".

Woman cannot live by sweatpants alone. The exercise of looking put together in an environment that is so unsettling is a good discipline. The ritual of getting dressed can still be a source of joy.

Pandemic be damned!



Yours in fashion  
in the Time of Covid-19,

*Faye*  
Founder  
Est. 1991



**BE LOYAL. SHOP LOCAL.**

Galleria West in Brookfield  
East Towne Square in Mequon

SHOP IN-STORE & ONLINE  
[www.fayes123.com](http://www.fayes123.com)



## 1 on 1 Customized Home Care in the safety & comfort of your home

*Our Nurses guide the care*

*Our Caregivers provide the care*

Ask us about our Memory at Home program that brings the best dementia trained caregivers to you - in your home!

### Home Care & Skilled Nursing Services

- Dementia/Alzheimer's Care
- Safety/Fall Prevention Program
- Meal Preparation
- Personal Hygiene
- Exercise Support
- Medication & Care Management
- Wound Care
- Transportation
- Dressing
- Bathing
- Shopping & Errands

Call for a free nurse assessment  
**262-365-1443**

[www.HomeHelpersWI.com](http://www.HomeHelpersWI.com)

Winner of Nations Highest Home Care Quality Award  
For the 2nd year in a row, Home Helpers is ranked in the Top 5% of home care companies nationwide



Each office is independently owned & operated

Owners:  
Laura Bireley, RN  
Tim Bireley



## Brr...it's cold outside.

**BE WARM AND SAFE INSIDE THIS WINTER**

We are in the midst of our love-it or hate-it season: winter. Along with the chapped lips, dry and cracked hands and the sniffles and sneezes comes THE COLD. While many of us are fortunate to have a warm place to call home, we certainly need to be aware of some important safety topics surrounding home heating.

Following these simple recommendations can help keep you as safe as possible this winter:

- ▶ Keep anything that can burn at least three feet away from heating equipment, like the furnace, fireplace, wood stove or portable space heater.
- ▶ Have a three-foot "kid-free zone" around open fires and space heaters.
- ▶ Never use your oven to heat your home.
- ▶ Have a qualified professional install stationary space heating equipment, water heaters or central heating equipment according to the local codes and manufacturer's instructions.
- ▶ Have heating equipment and chimneys cleaned and inspected every year by a qualified professional.
- ▶ Remember to turn portable heaters off when leaving the room or going to bed.
- ▶ Always use the right kind of fuel, specified by the manufacturer, for fuel burning space heaters.
- ▶ Make sure the fireplace has a sturdy screen to stop sparks from flying into the room. Ashes should be cool before putting them in a metal container, and the container should be a safe distance away from your home.
- ▶ Be sure you have working carbon monoxide (CO) and smoke alarms located on every level of your home. In addition, smoke alarms should also be placed inside and outside of every sleeping area.
- ▶ Test your smoke and carbon monoxide alarms and practice your home fire escape plan monthly.

North Shore Fire/Rescue can help residents with recommendations regarding home heating, as well as many other home safety topics, as part of our FREE Home Safety Assessment Program. To schedule an assessment, visit our website, [www.nsfire.org](http://www.nsfire.org), and click the "Schedule A Home Safety Assessment" option.



CFAI logo printed with permission.



BY  
BATTALION  
CHIEF DAN  
TYK



Thank you to the Village and community for your support in 2020. Despite COVID, we improved our environment and supported pollinators, birds and insects. The Club's mission to stimulate an interest in horticulture, develop gardens, protect our natural surroundings and beautify civic grounds was accomplished through the following projects this year:

- ▶ Completion of phase two revitalization of Silver Spring Park, including steps to eradicate invasive plant species, installation of a bioswale drain and a park bench.
- ▶ Creation of a native prairie in the Cahill Park retaining wall
- ▶ Maintenance of Cahill and Klode parks' butterfly gardens, and Lydell Community Center flower beds
- ▶ Establishing a seed library with the Public Library and Community Garden
- ▶ Hosting a Farmer's Market booth
- ▶ Educating the community on natural lawn care and gardening topics through social media, news articles and public meetings.

As we begin 2021, we ask that you **SAVE THE DATE** for our second Garden Walk: Artisans in the Garden, **Sunday, July 25, 2021**. The walk will feature artists in Bay residents' private gardens. For more information, follow us on Facebook and Instagram, or visit us at: [whitefishbaygardenclub.com](http://whitefishbaygardenclub.com)



BY JILL GRIFFEE ROSS

**Thanks for Your Past Business**

North Shore's Premier Auto Repair Facility

**For Over 38 Years**

Save \$100! Bonus Discount	Ultra Oil Change & Filter																		
<table border="1"> <tr><td>SPEND THIS</td><td>SAVE THIS</td></tr> <tr><td>\$100 - \$199</td><td>SAVE \$15</td></tr> <tr><td>\$200 - \$299</td><td>SAVE \$20</td></tr> <tr><td>\$300 - \$399</td><td>SAVE \$30</td></tr> <tr><td>\$400 - \$499</td><td>SAVE \$40</td></tr> <tr><td>\$500 - \$599</td><td>SAVE \$50</td></tr> <tr><td>\$600 - \$699</td><td>SAVE \$60</td></tr> <tr><td>\$700 - \$899</td><td>SAVE \$75</td></tr> <tr><td>\$900 or more</td><td>SAVE \$100</td></tr> </table>	SPEND THIS	SAVE THIS	\$100 - \$199	SAVE \$15	\$200 - \$299	SAVE \$20	\$300 - \$399	SAVE \$30	\$400 - \$499	SAVE \$40	\$500 - \$599	SAVE \$50	\$600 - \$699	SAVE \$60	\$700 - \$899	SAVE \$75	\$900 or more	SAVE \$100	<p><b>\$24.95</b></p> <p>Includes 22 Point Inspection</p> <p>Up to 5 quarts on most cars, SW20 or SW30. Synthetic oil &amp; special filters extra. Plus environmental fee. By appointment only. No other discount applies. Expires 1/31/21.</p>
SPEND THIS	SAVE THIS																		
\$100 - \$199	SAVE \$15																		
\$200 - \$299	SAVE \$20																		
\$300 - \$399	SAVE \$30																		
\$400 - \$499	SAVE \$40																		
\$500 - \$599	SAVE \$50																		
\$600 - \$699	SAVE \$60																		
\$700 - \$899	SAVE \$75																		
\$900 or more	SAVE \$100																		

**We'll repair your car for less! FAST!** Fixed Right the First Time!

**Silver Spring Automotive, Inc.**  
2003 W. Bender Road, Glendale, 53209  
2 blocks west of Green Bay Ave, Speedway & The Green 7  
**414-351-5080**  
[silverspringautomotive.com](http://silverspringautomotive.com)

Fast 24 Hour Towing Available  
Dave's Towing • 414 491-2587

ACCREDITED BUSINESS ASE

**Happy New You!**

**Treat Yourself to a New Look**

Experience Life with Great Vision! Petrou Eye Care

414.247.2020 | [petroueyecare.com](http://petroueyecare.com) | Glendale

# Wintertime Trivia

- Which president banned Christmas trees in the White House?**
  - George Washington
  - Herbert Hoover
  - Theodore Roosevelt
- No two snowflakes are exactly the same.**
  - True
  - False
- It can be too cold to snow.**
  - True
  - False
- How do Japanese macaques survive winter?**
  - They spend most of the winter in hot springs.
  - They hibernate.
  - They migrate.
- Which state grows the most commercial Christmas trees?**
  - Wisconsin
  - Washington
  - Colorado
  - Oregon
- Who established January 1st as the start of the New Year?**
  - Julius Caesar
  - Shakespeare
  - Saint Gregory the Great
  - Franklin Roosevelt
- In early England, what was the most common celebratory Christmas dinner?**
  - Turkey
  - Fish
  - Pig's head
  - Venison
- How many Christmas trees are sold every year?**
  - 950,000-1 million
  - 5-6 million
  - 10-12 million
  - More than 25 million
- On Uranus, how long does winter last?**
  - 2 months
  - 10 months
  - 2 years
  - 21 years
- The South Pole is colder than the North Pole.**
  - True
  - False

BY BETH GRUENSKI

Sources: [www.mentalfloss.com](http://www.mentalfloss.com), [lovetoknow.com](http://lovetoknow.com), [foresthistor.org](http://foresthistor.org), [nationalgeographic.com](http://nationalgeographic.com)

Answers: 1) c, 2) b, 3) b, 4) a, 5) d, 6) a, 7) c, 8) d, 9) d, 10) a

**PORTRAITS**

Linda Smallpage

[www.boutiquephotographer.com](http://www.boutiquephotographer.com)

Thank you to all the Frontline Heros!

COLDWELL BANKER

**Kelsey Wenner**  
414.465.9123  
[kelsey.wenner@cbexchange.com](mailto:kelsey.wenner@cbexchange.com)

Owned by a subsidiary of NRT LLC

# CALENDAR OF EVENTS January 2021

## Ongoing

### SLICE OF ICE

@Red Arrow Park  
Experience ice skating downtown, a Milwaukee tradition. New this year, reserve your 90 minutes of skate time. Check the website for more information. [county.milwaukee.gov/EN/Parks/Explore/Slice-of-Ice](http://county.milwaukee.gov/EN/Parks/Explore/Slice-of-Ice)

## Ongoing

### Virtual Art Projects and Tours

Milwaukee Art Museum  
All website visitors have access to tours and family project ideas. [www.mam.org](http://www.mam.org)

## Ongoing

### Social Distanced Walking

@Lynden Sculpture Garden  
Enjoy a walk and art as you stroll through the sculpture garden free of charge thanks to the Herzfeld Foundation. **Time:** 10am-4pm  
[www.lydensculpturegarden.org](http://www.lydensculpturegarden.org)

## Saturdays, Ongoing

### Milwaukee Winter Farmers Market

@Mitchell Park Domes Annex  
**Time:** 8:30am-12:30pm  
**Cost:** Free  
[www.mcwfm.org](http://www.mcwfm.org)

## Fri., Jan. 1

### Polar Bear Plunge

@Bradford Beach  
This is always an unofficial event. **Time:** 12pm  
**Cost:** Free  
[www.polarplungemilwaukee.com](http://www.polarplungemilwaukee.com)

## Thurs., Jan. 3

### Holiday Show

@Mitchell Park Domes  
Reserve your time slot and enjoy poinsettias like you've never seen before! Visit the website for details. [county.milwaukee.gov/EN/Parks/Explore/The-Domes](http://county.milwaukee.gov/EN/Parks/Explore/The-Domes)

## Sat., Jan. 30

### Fire and Ice Winter Festival

@Elm Grove Woman's Club  
Join the fun at this outdoor fundraiser for the Elm Grove Woman's Club featuring food trucks, entertainment and a live auction. **Time:** 11am-5pm  
[www.egwc.org](http://www.egwc.org)

## SAVE THE DATE

### Fri., Feb. 5-Sat., Feb. 6

#### MIAD Holiday Sale

This year the sale is going virtual. The sale will feature amazing creations by students in all media — from paintings and sculptures to cards, jewelry and more. Proceeds from the MIAD Holiday Sale support the participating students, artists and designers, while also benefiting MIAD student scholarships. [www.miad.edu](http://www.miad.edu)

### Sat., Feb. 6-Sun., Feb. 7

#### Big Freeze Disc Golf Tournament

@Dretzka Park, Milwaukee  
Keep up your disc-golf skills by entering this frozen-fairway tournament! Sign up with a partner to play one of the state's top disc-golf courses! Pro Day is followed by a day of play for mixed, intermediate, and advanced teams. Online registration closes Feb. 4. **Time:** 7:15am  
[www.discgolfscene.com](http://www.discgolfscene.com)



**BELL ORTHODONTIC SOLUTIONS**  
Gregory D. Bell, DDS, MS

3 CONVENIENT LOCATIONS

DIAMOND INVISALIGN PROVIDER 2020



**NEW PATIENT SPECIAL**  
**\$250 OFF** Full Treatment Including a Free Consultation (Affordable Payment Plans)  
[www.bellortho.com](http://www.bellortho.com)

\* Not valid with any other discounts or coupons. Valid only at start of full treatment. Must be presented at time of consultation.

**CEDARBURG**  
W68 N930 Washington Ave.  
Cedarburg, WI 53012

**PORT WASHINGTON**  
1000 Wisconsin Centre  
Port Washington, WI 53074

**GLENDALE**  
5380 N. Port Washington Rd.  
Glendale, WI 53217

262- 377-7410

The best home to be in is your own.



Whether you are looking for someone to help an aging parent a few hours a week or need more comprehensive assistance, Home Instead can help.

**Home Instead CAREGivers™** can provide a variety of services. Some include:

- Personal Care
- Memory Care
- Meals & Nutrition
- Transportation
- Household Duties
- Respite Care
- Hospice Care Support
- Care Management

Call today for an assessment and consultation with a Nurse Care Manager

**414.239.9612**



*To us, it's personal.*

[HomeInstead.com/315](http://HomeInstead.com/315)

Each Home Instead Senior Care® franchise office is independently owned and operated. © 2019 Home Instead, Inc.

**SPEND YOUR LIFE LIVING.**



414.615.1801  
[mosaicfinancial@nm.com](mailto:mosaicfinancial@nm.com)  
Locations including Bayshore Town Center



06-1012 ©2020 The Northwestern Mutual Life Insurance Company (NM), Milwaukee, WI.



**Portable Moving | Storage**  
PROMO CODE: **BAY LEAVES** | 414-486-3688 | [PODS.com](http://PODS.com)



**FAIR AND SQUARE**  
CUSTOM REMODELING LLC

[jsieberg@me.com](mailto:jsieberg@me.com) • 414 688 4738

**M**  
CUT COLOR STYLING

PRIVATE SUITE | COVID SAFE ENVIRONMENT

412 E. SILVER SPRING • STE. 201 • 414.962.7450

### Free Throw Contest

Come on out and show us your skills! Whitefish Bay Recreation hosts its annual Free Throw Contest for girls and boys, grades 3-8, on Saturday, February 20, at the Whitefish Bay High School Field House. All must be registered and checked in by 11 a.m. Late arrivals will not be allowed to participate. Boys and girls compete separately in each grade division and will attempt 20 throws. The winning boy and girl from each grade division will receive a trophy. This is a FREE contest. Pre-registration is encouraged, however, walk-ins are welcome.

### Kick Your New Year's Fitness Resolution into High Gear

The Community Fitness Center located in the High School Field House always has openings—you are never too late to register. Kick off the New Year by purchasing a membership today! Participants can enjoy a workout on the state-of-the-art cardio equipment and in the weight training area.

- ▶ **January 4–May 28 (Closed April 2)**
  - ▶ **Community Hours:**
    - ▷ Mon–Fri 5:30 a.m.–8:00 a.m.
    - ▷ Mon–Thurs 6:00 p.m.–8:30 p.m.
    - ▷ Sat 8:00 a.m.–11:30 p.m.
  - ▶ **Membership Fee:**
    - ▷ \$150 Residents/\$130 Senior Residents
    - ▷ \$15 each for lap swim or walk fit add on
- \*See the Winter/Spring Recreation Guide for add-on program descriptions.

Personal Training opportunities are available. Register as an individual or as a pair for packages of one to eighteen 45-minute sessions. Each session includes an initial consultation and a personal plan to help you reach your fitness goals.

Register online at <https://wfbrec.iscorp.com/wbwsc/webtrac.wsc/splash.html?> or in-person at the Whitefish Bay Recreation Department inside Lydell Community Center.

### Lydell Preschool Open House and 2021-2022 Open Enrollment Dates

 **Lydell Preschool 2021-2022 Open House**

- ▶ Lydell Community Center, Rooms 26 & 28
- ▶ Tuesday, January 5, 2020 | 5:30 p.m.–7:00 p.m.

Open Enrollment begins on Wednesday, January 6, from 4:30–6:30 p.m., and then resumes at 8:00 a.m. on Thursday, January 7. All open enrollments must be done in-person at the Recreation Department and are received on a first-come, first-served basis. Packets that are mailed, faxed or dropped before/after office hours will not be accepted.

### WHITEFISH BAY SENIOR "55 AND BETTER" PROGRAMS ...IN THE COMMUNITY FOR THE COMMUNITY

#### NEW! Senior Grab 'N Go Drive-Thru Dining

Grab 'n Go Dining was created to enable our seniors to stay safe while grabbing a hot meal provided by Nicolet Catering Services. Pre-registration is required. No meals will be sold on-site. Save your receipt and place it in your window when you arrive to pick up your meal. Recreation Department staff will bring your meal to your car. Lunches are served hot in a microwavable to-go container. Eat hot when you get home, or refrigerate and reheat later!

- ▶ **Pick-up Time:** 12:00 p.m. –1:00 p.m.
- ▶ **Location:** Lydell Community Center Parking Lot
- ▶ **Cost:** \$6.50 per meal

#### January 16: Celebrate the New Year 2021

Savory Meatloaf and Whipped Potatoes with Gravy, Soft Pan Roll with Butter, Green Peas and Chocolate Brownie with Icing  
Register online at <https://wfbrec.iscorp.com/wbwsc/webtrac.wsc/splash.html?> or in-person at the Whitefish Bay Recreation Department inside Lydell Community Center.



BY CARIN KELAND,  
DIRECTOR OF RECREATION AND  
COMMUNITY EDUCATION

**Imagine your home, totally organized!** Custom Closets, Garage Cabinets, Home Offices, Pantries, Laundries, Hobby Rooms and more...



Garage Cabinets



Laundry Rooms



Walk-In-Closets

**SPECIAL FINANCING FOR 12 MONTHS!**  
With approved credit. Call or visit your Designer for details. Not available in all areas.

**40% off Plus Free Installation**

Terms and Conditions: 40% off any order of \$980 or more or 30% off any order of \$680-\$979 on any complete Custom Closet, Garage Cabinets, Home Office, Pantry, Laundry, Wall Bed, Wall Unit, Hobby Room or Garage Flooring system. Take an additional 15% off on any complete system order. Not valid with any other offer. Free installation with any complete unit order of \$600 or more. Expires in 30 days.

Call for a free in-home design consultation and estimate  
**(262)239-4502** BVM  
[www.closetsbydesign.com](http://www.closetsbydesign.com) Follow us   



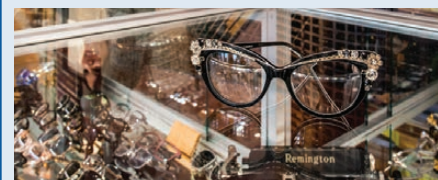


2567 N Downer Ave. Milwaukee  
414-964-3125  
M-W-F 10am-6pm;  
T-TH 10am-7pm; SAT 9am-4pm

*Offering same day service on many eyeglass prescriptions*

**OPTOMETRISTS:**  
Brian McGinley O.D. | Camthu Pham O.D.

- ▶ Accepting most eye insurances
- ▶ Latest exam technology and Contact Lens fittings
- ▶ Convenient Appointment Times



**OPTIXONDOWNER.COM**





**Interested in becoming a Sponsor?**

Contact the Publisher of this magazine for more information.

**SOLD**

Address	List Price	Sold Price	Address	List Price	Sold Price
5123 N Bay Ridge Ave.	\$299,900	\$290,000	5440 N Berkeley Blvd.	\$459,900	\$453,000
4829 N Marlborough Dr.	\$299,900	\$326,000	728 E Lexington Blvd.	\$475,000	\$462,000
5900 N Shoreland Ave.	\$349,000	\$346,250	6120 N Kent Ave.	\$485,000	\$459,000
4718 N Hollywood Ave.	\$350,000	\$353,000	1024 E Colfax Pl.	\$558,000	\$538,000
5677 N Lake Dr.	\$350,000	\$345,000	5123 N Lake Dr.	\$619,900	\$630,000
4848 N Diversey Blvd.	\$359,900	\$352,500	5440 N Shoreland Ave.	\$630,000	\$632,750
5201 N Kimbark Pl.	\$399,700	\$400,000	5163 N Lake Dr.	\$679,900	\$660,000
5837 N Kent Ave.	\$425,000	\$425,000	5352 N Santa Monica Blvd.	\$679,900	\$687,000
1570 E Blackthorne Pl.	\$429,900	\$400,000	726 E Beaumont Ave.	\$699,000	\$700,000
4975 N Idlewild Ave.	\$449,000	\$440,000	5247 N Hollywood Ave.	\$849,000	\$802,500

**PENDING**

Address	List Price	Address	List Price
338 E Beaumont Ave.	\$249,900	6006 N Lake Dr.	\$1,100,000
5131 N Berkeley Blvd.	\$364,900		

Best Version Media does not guarantee the accuracy of the statistical data on this page. The data does not represent the listings of any one agent or agency but represents the activity of the real estate community in the area. Any real estate agent's ad appearing in the magazine is separate from the statistical data provided which is in no way a part of their advertisement.

**gallery 505**  
A new year, new artists & new original paintings for your art collection!

**PEACE IN WONDERLAND**

Opake One - "Peace In Wonderland", 30"x 30" Mixed Media on Wood

[www.gallery-505.com](http://www.gallery-505.com)

517 E. Silver Spring Dr. | Whitefish Bay | (414) 962-6302



**Friends of Whitefish Bay Library Writing Contest**

For the eighth consecutive year, Friends are offering the Friends of the Whitefish Bay Library Writing Contest. The contest includes submission categories for short stories (1,000 words or less), memoirs (1,000 words or less) and poetry (200 words or less), and is open to anyone age 16 and older. Submissions will be accepted from January 11 through February 8, and are limited to one entry per person per category. Cash prizes will be awarded in early spring. Please include a cover page on your entry with the following: Name, address, email, phone number, entry date and category.

**Drop off entries in person at the Adult Services Desk or mail them to:**

- Friends of the Whitefish Bay Library Writing Contest  
5420 N Marlborough Drive, Milwaukee, WI 53217

Depending on the status of the pandemic, a reception may be held where winners will be on hand to read their pieces. Winners will also have their entries posted to the library's website.

This contest is not sponsored by or endorsed by Best Version Media in any way.

**Never Stop Learning with Lynda.com**

Lynda.com helps anyone learn software, technology, creative and business skills to achieve their personal and professional goals. With lynda.com, you'll receive unlimited access to a vast subscription library of high-quality, current and engaging video tutorials taught by recognized industry experts. Courses include web design, IT, education/instruction, media production and business. All you need is a library card and PIN to unlock your learning through the library's website.

BY SCOTT LENSKI, HEAD OF ADULT SERVICES



**TOGETHER, WE CAN**

*unlock THE potential*

**2021 HAS TO OFFER**

**UNLOCK**  
*Ilissa Boland*

ShoreWEST REALTORS

As your trusted advisor, let me help you take advantage of our strong market conditions and together we'll make the best of the new year!

414.688.7942 | [iboland@shorewest.com](mailto:iboland@shorewest.com) | [ilissa.shorewest.com](http://ilissa.shorewest.com)

**WEATHERTIGHT**

IT'S A NEW YEAR!  
WE'RE LOOKING FOR A NEW WINNER OF OUR

**\$25,000**  
HOME MAKEOVER SWEEPSTAKES

This Whitefish Bay Homeowner upgraded their entry door!  
What's on your list?

WINDOWS • ENTRY DOORS • SIDING • ROOFING  
SOFFIT • FASCIA • GUTTERS • GUTTER PROTECTION

**WeatherTightCorp.com/Sweepstakes**  
**414 - 459 - 3860**

Sweepstakes rules apply. Visit us online for sign up and details.

They say

timing

If you're thinking about selling your home this spring, then we should talk **NOW**.

is everything.



414-350-4611

elsafyteam@shorewest.com  
elsafyteam.com



ESSAM ELSAFY

