

March 2022

BayLeaves



Liddle Family

BRINGING MORE LIGHTS TO SILVER SPRING


Best Version Media

CELEBRATING
15
YEARS
ESTABLISHED 2007

Photo by
Boutique
Photographer

The Official Village Weekly E-Newsletter:
 Be the first to know about What's Up at the Village! Subscribe to the free weekly Official Village Online Newsletter: Send your email address to Tim Blakeslee, Assistant Village Manager, t.blakeslee@wfbvillage.org or subscribe at bit.ly/1U49dmE



Important Property Tax Payment Information:
 2nd installment for taxes due March 31

WHAT HAPPENS IF I DO NOT PAY ON TIME?

For any property tax bill where payment is not made timely, the bill is considered delinquent and the remaining balance is subject to interest and penalty. When paying in installments, if a payment is missed, the installment plan is no longer available and the balance is due in full. Pursuant to Wisconsin State Statutes and Village of Whitefish Bay Municipal Code, delinquent property tax bills are charged 1.5% interest and penalty per month (in the calculation of interest and penalty, a partial month is considered a full month). Interest and penalties are charged retroactive to February 1, 2022.

LINDSEY VEBBER
 licensed broker
 414-334-0470
 lvebber@kw.com

FERNWOOD
 real estate
 KELLER WILLIAMS

GoldenPATH
 HOME HEALTH CARE SERVICE
 Serving the North Shore

414.236.5208
 www.goldenpathhomecare.com

Totally Clean

GET A CLEANER, HEALTHIER HOME

ELIMINATE
 Mold, Bacteria,
 Dust Mites, Pollen

262.542.4000
 TotallyCleanServices.com

HOW DO I MAKE A PAYMENT?

- ▶ **By Mail:** Make check payable to the Village of Whitefish Bay Send check to Village of Whitefish Bay, 5300 N. Marlborough Drive, Whitefish Bay, WI 53217
- ▶ **On the Village Website, www.wfbvillage.org:** Click "Pay Property Tax Bill Online" on the bottom of page or visit: <https://client.pointandpay.net/web/VillageofWhitefishBayWI>
 - ▷ User Fees Do Apply:
 - » Credit/Debit Cards – 2.39% per Transaction, \$1.50 minimum
 - » Electronic Check – \$1.50 flat fee
- ▶ **Village Hall 24-Hour Night Depository, located in entrance of Village Hall:** Deposits made prior to midnight will be processed using that day's date.
 - ▷ Please note: Associated Bank will not be collecting taxes this year.

Want to view your property tax receipt online? Visit the following link to watch the video walkthrough: <https://youtu.be/u4DBP44jcu0>



BVM Best Version Media
 "Bringing People Together!"



Photo by Julie Collins

Publisher: Kathy Durand
Bay Leaves Project Coordinator: Beth Raab

PUBLICATION TEAM
Content Coordinator: Christine McBride
Designer: Laura Wire
Contributing Photographer: Boutique Photographer

ADVERTISING

Interested in advertising in any of the following Wisconsin communities? Appleton/Neenah, Bayside, Bay View, Brookfield, Cedarburg, Delafield, Fond du Lac, Fox Point, Franklin, Germantown, Grafton, Green Bay, Hartland, Madison Area, Menomonee Falls, Mequon, New Berlin, North Point, Oak Creek, Oconomowoc, Oshkosh, Pewaukee, Racine, River Hills, Waukesha, Wausau, Wauwatosa .

Contact: Kathy Durand at (262) 716 4788, or kdurand@bestversionmedia.com

FEEDBACK/IDEAS/SUBMISSIONS

Have feedback, ideas or submissions? We are always happy to hear from you! Deadlines for submissions are the 20th of each month. You may also email your thoughts, ideas and photos to Christine McBride at cmcbride@bestversionmedia.com

CONTENT SUBMISSION DEADLINES

Content Due	Edition Date
December 20	February
January 20	March
February 20	April
March 20	May
April 20	June
May 20	July
June 20	August
July 20	September
August 20	October
September 20	November
October 20	December
November 20	January

IMPORTANT PHONE NUMBERS

Emergency	911
Police Administration	(414) 962-3830
Police (non-emergency)	(414) 351-9900
North Shore Fire Dept. (non-emergency)	(414) 357-0113
Village Hall	(414) 962-6690
Public Library	(414) 964-4380
Dept. of Recreation & Community Education	(414) 963-3947
Whitefish Bay School District	(414) 963-3921

Any content, resident submissions, guest columns, advertisements and advertorials are not necessarily endorsed by or represent the views of Best Version Media (BVM) or any municipality, homeowners associations, businesses or organizations that this publication serves. BVM is not responsible for the reliability, suitability or timeliness of any content submitted. All content submitted is done so at the sole discretion of the submitting party. ©2022 Best Version Media. All rights reserved.

Chip and his 'breakfast club' buddies who walk to get breakfast together on Silver Spring or Oakland Avenue!



DEAR RESIDENTS,

We have lived in Whitefish Bay since our son Chip, was in preschool. He has friends from different groups including basketball, tennis, and obviously school. It's nice to have a friend group, but I always encourage him to branch out and be kind to any new kid in school each year. Everyone knows it's hard to be 'the new kid' and nice to have a friendly face in class. This year, Otis, the son of our feature family, was new to Chip's class. The two hit it off and when the weather is nice will play outside after school together.

In addition to being the new family, the Liddle family became the new business owners of Mixed Bag, located on Silver Spring. It's great to have both new families and new businesses in Whitefish Bay!



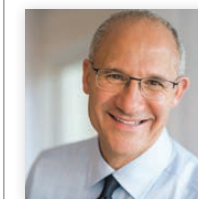
CHEERS,
Christine McBride



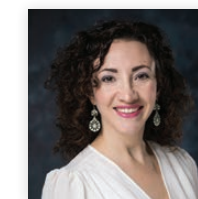
VILLAGE OF WHITEFISH BAY WISCONSIN

Kevin Buckley, Village President | Bay Leaves is mailed directly to your home through the courtesy of our advertisers at no cost to you or the Village of Whitefish Bay. We encourage you to thank them with your support.

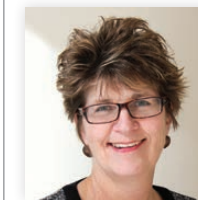
EXPERT CONTRIBUTORS



REAL ESTATE
ESSAM ELSAFY
 Shorewest Realtors®
 (414) 350.4611
eelsafy@shorewest.com



EVENT PLANNING EXPERTS
WISCONSIN CENTER DISTRICT
 Sarah Maio, Vice President of Marketing and Communications
SMAio@wcd.org
 414-908-6056 | M: 414-507-7574



SENIOR LIVING
SAINT JOHN'S ON THE LAKE
 Luci Klebar
www.saintjohnsmilw.org
 414.272.2022

TO LEARN MORE ABOUT BECOMING AN EXPERT CONTRIBUTOR, contact **KATHY DURAND** at (262) 716 4788 and kdurand@bestversionmedia.com



Liddle Family

BRINGING MORE LIGHTS TO SILVER SPRING

Moving to a different community, having two kids virtually enrolled at new schools, and opening a brick and mortar business on Silver Spring, all in the span of a year, is a lot for any family to navigate. The Liddle family was able to do so, having a strong family foundation to help support each other through the big life changes they just went through.

Brendan and Amber Liddle were looking to move from Bayview, Wisconsin to anywhere in the United States that offered a great community feeling with a close enough proximity to schools that their children could walk to school. "We had really been looking all over the US, but a friend had recently relocated to Whitefish Bay and kept telling us how great it was, plus it checked all the boxes for what we had been hoping to find in a community," said Amber.

In the midst of the world first dealing with the Covid situation, in April 2020, they put an offer on a house and it was accepted. "It was pretty nerve-racking buying and selling a house at that time, but now two years later we are happy with how our life has transformed living here," Brendan noted. They have two children, Ingrid (14) and Otis (11) who both attend Whitefish Bay public schools.

When Ingrid was first born, and Brendan was busy traveling as a chemist, Amber began using her sewing skills to make unique baby bibs. Having a good eye for fun fabrics, Amber was able to pick out patterns and designs that caught the attention of people she would encounter at the park or restaurants, inquiring where they could find the baby bibs. "It started as a hobby, just selling to friends or posting to online marketplace groups," Amber said. "It quickly grew into having an online shop, Liddle Handmade, and having numerous wholesale orders."

After settling into their new house in Whitefish Bay, Amber began thinking about opening up a brick and mortar location on Silver Spring Drive. Working with the landlord, Amber was able to create the vibe she was going for and thus, Mixed Bag, was opened in November 2021. "The space is the perfect size to showcase my own items, unique finds from other artists, and now also serves as my sewing location. My family was beyond happy to have the sewing room moved from the basement of our house to a different spot," laughed Amber.

Being located on Silver Spring has been great for business so far and Amber is thankful for all the community support. "When it's not -10 degrees outside, people are walking up and down the street and come in to say hello and shop. It's been a great way to get to know more people and



Enjoy Exciting City Life!

Customizable Apartments Available in All 3 Towers





SAINT JOHN'S
ON THE LAKE

"When we lived in Whitefish Bay, we always enjoyed walking to beautiful Lake Michigan. And now, living at Saint John's, we can continue that tradition by hopping on our bikes, and pedalling a block to ride along the shoreline!"

— Anne & Art Brooks, Saint John's Residents

For more information about life at Saint John's call 414-831-7300 or visit our website, at www.SaintJohnsMilw.org or use your phone's camera to scan this image



SCAN ME

414-831-7300 • 1840 North Prospect Avenue • Milwaukee, Wisconsin 53202

the support of shopping local during the holidays was really appreciated," Amber said. When not working at Mixed Bag, the Liddle family enjoys caring for their pets, and supporting their children in various activities. Ingrid plays guitar, is on student council and the forensics team. Otis plays soccer. Kayaking along the Milwaukee River is a favorite family pastime in the warmer months.

"For me, moving to Whitefish Bay has made a lot of my dreams come true," said Amber. "I've always wanted to raise our children in a walkable community, and having worked in book and music stores, I've always enjoyed working with customers. I'm happy that I was able to put all of my talents together and open a shop in the same community that we live. It has been a fun adventure!"

BY CHRISTINE MCBRIDE
PHOTOS BY BOUTIQUE PHOTOGRAPHER



Spring 2022 Election Information:



- ▶ **Polls will be open on April 5, 2022.**
 - ▷ Polling places are open from 7:00 a.m.–8:00 p.m. on Election Day. Please use the Ward Map (PDF) link to see where your polling place is: <http://www.wfbvillage.org/DocumentCenter/View/508/>.
- ▶ **Offices to be elected for the April 5, 2022 election include:**
 - ▷ Milwaukee County Circuit Court Judge,
 - ▷ Milwaukee County Supervisor,
 - ▷ Whitefish Bay School District School Board Member and
 - ▷ Village of Whitefish Bay Trustee

- ▶ **How to Request an Absentee Ballot:**
 - ▷ You may request a ballot online at www.myvote.wi.gov.
 - ▷ You also may request a ballot be mailed to you by emailing the Village: elections@wfbvillage.org.
 - ▷ Your request must include a copy of WI photo ID and be received no later than 5:00 p.m. on March 31, 2022.
- ▶ **Your options to return your ballot:**
 - ▷ Place your ballot in the mail. The U.S. Postal Service sorts and delivers official election mail in an expedited fashion.
 - ▷ Drop your ballot off at the Village Hall front desk during regular business hours.
 - ▷ Please remember that your ballot must be received at Village Hall (not postmarked) by 8:00 p.m. on April 5, 2022.
- ▶ **In-Person Absentee Voting:**
 - ▷ In-Person Absentee Voting will occur on weekdays from Tuesday, March 22–Friday, April 1, 2022, during regular business hours (until 5:00 p.m. on April 1, 2022).

WE'RE PROUD TO BE
**WHITEFISH BAY'S
COMMUNITY BANK**

At Town Bank, we've called Wisconsin home for more than 25 years and take pride in serving our communities with a true local focus. As we open our new branch in Whitefish Bay, we want you to know we're here to support local families, businesses, and nonprofit organizations. In addition to providing reliable and convenient banking solutions, we make it a priority to get involved and give back to the people who work to make this community so great, because this is our home, too.

TOWN BANK
N.A.
A WINTRUST COMMUNITY BANK

105 W. Silver Spring Dr. | Whitefish Bay, WI 53217
414-615-8445 | townbank.us

MEMBER FDIC

30 YEARS of
WINTRUST
Celebrating our family

CORCORAN REALTY & CO.

Now Scheduling Spring & Summer '22 Home Sale Consults!

CorcoranRealtyCo.com (414)214-0335

PREP, List, Stage & Sell!

BEFORE

AFTER

BENCHMARK
HANDYMAN & LAWN SERVICES LLC.
414.614.0237

KITCHEN, BATH, OR BASEMENT REMODEL

VISIT BENCHMARKMILW.COM

WEATHER TIGHT

★★★★★

"I had Weather Tight order and install a new patio door. Since it was a special order, the time to receive the door was longer, but definitely worth the wait! The quality and looks of the door are great. The installer provided an excellent installation with an attention to detail. I enjoyed dealing with Weather Tight, would use and recommend them again."

KASIAN - NEW BERLIN, WI

\$25,000 HOME MAKEOVER SWEEPSTAKES

ENTER TODAY FOR YOUR CHANCE TO WIN

WeatherTightCorp.com 414 - 459 - 3860

Visit WeatherTightCorp.com/sweepstakes for official rules and details.

FHK INSURANCE

We help you navigate health insurance options at no additional cost.

- Medicare Advantage
- Medicare Supplements
- Individual & Family Plans
- Rx Drug Plans
- Dental & Vision

FHKInsurance.com | 414.228.7555

TIMING IS CRITICAL

Don't Delay Important Cancer Screenings



REGULAR SCREENING for breast, cervical and colorectal (colon) cancers is recommended for adults, as well as lung cancer screening for individuals at high risk. Screening means checking your body for cancer prior to the development of signs or symptoms. Getting screening tests regularly may find breast, cervical and colorectal (colon) cancers early, when treatment is likely to work best.

Where can you get screened?

- ▶ Talk to your primary care provider about regular screenings. Many screening tests are covered by insurance.

- ▶ Milwaukee Health Services, a federally funded health center, provides primary care to patients regardless of their ability to pay.
- ▶ The Well Woman Program (WWP) through the City of Milwaukee Health Department provides preventive health screening services to 45-64 year old low-income women who are uninsured or underinsured. For the Suburban Milwaukee County Local Coordinator please call 262-636-9292.

BY KAYLA BONACK, MPH



YOUR NEW FAVORITE SPACE

When you bring natural light and fresh air deeper into your home, it can change how you think, feel, and work in your space. At Marvin, windows and doors are designed to open new possibilities, helping you feel connected to the outdoors.

Experience windows and doors differently at your local Marvin dealer today.

HARDWARE HOURS
 Mon-Fri | 7am - 7pm
 Sat | 8am - 6pm
 Sun | 9am - 5pm

LUMBER HOURS
 Mon - Fri | 7am - 5pm
 Sat | 8am - 12pm
 Sun | CLOSED

1014 E. Chambers St., Milwaukee
 414-264-5700 | www.bliffertlumber.com



© 2021 Marvin Lumber and Cedar Co., LLC.



Shop Local This Spring



IN THE NORTHERN HEMISPHERE, March is usually considered the first month of spring—wouldn't we all like that? Days are getting longer, and the Merchants on Silver Spring Drive in Whitefish Bay can help you celebrate some of your favorite upcoming holidays.

March brings St. Patrick's Day, and everyone is a little Irish that day—make sure you get creative with decorations, find fun St. Patrick's Day clothing and find out who is cooking up corn beef. The Merchants of Whitefish Bay have what you need to enjoy a fun and safe celebration. Each business is so grateful for your local support—it means the world to them!

With summer just around the corner, the Merchants of Whitefish Bay are in the process of planning some of your favorite events! Mark your calendars for Bay Day (May 7), Sip*Shop*Support Local (First Thursdays of June, July, August and September), the WFB Art Festival (July 9 & 10), Side Walk Sale (July 15 & 16) and more. We also look forward to the completion of Consaul Commons—a wonderful meeting place for residents and visitors.

The Merchants of Whitefish Bay make up the vibrant shopping district in Whitefish Bay, centering on Silver Spring Drive. In 2022, the Business Improvement District (BID) Board will continue to strategically plan with Graef and the Village to collaboratively cultivate and maintain a diverse portfolio of businesses in this area. As part of our mission "to champion the downtown Whitefish Bay business district as an exceptional place to shop, live and conduct business," we want to promote Silver Spring Drive as a destination for residents and shoppers to gather.

Make sure you are following us on www.merchantsofwhitefishbay.com, where you can also sign up for our monthly newsletter, on Facebook @ShopWFB and on Instagram @WFBID.

BY KATIE COMMER, EXECUTIVE DIRECTOR, BUSINESS IMPROVEMENT DISTRICT (BID)

STOMPER Concrete

Residential/Commercial
 Driveways • Garage Floors
 Patios • Decorative Concrete

Office: 414-777-3700
 stomper8878@yahoo.com

FREE prescription delivery offered to Whitefish Bay residents

Pharmacy Celebrating 90 Years of Serving the North Shore!

- Free local delivery
- Curbside Rapid Covid Testing (results in 15 minutes)
- The North Shore's longest serving Independent Pharmacy

Transferring prescriptions is simple - stop by, give us a call, or visit our website.

414.962.9665
 northshorepharmacy.org
 1421 E. Capitol Dr. | Shorewood

AJ PAINTING CONTRACTORS Inc.

Extreme Wisconsin summers and winters tend to fade away the vibrancy and protection of your home's exterior, leaving you with a chipped and dull-looking exterior. Your home deserves to stand out from the crowd all year-round.

Interior & Exterior Painting

Veteran Owned
 Whitefish Bay Resident
 Complimentary Estimates

414.286.4040 ajpaintingcontractors.com



HAVING PETS can present owners with anxiety when it is time to travel. Who can you trust to watch your pets? What are the costs?

With warmer weather approaching, it is best not to wait until the last minute to find the right person or place to bring your dog. The best sitters book up far in advance. Start searching now. Here are tips to ensure success when leaving your pet while you travel:

- ▶ Make sure your pet is up to date on vaccines, is licensed, groomed if necessary and have copies of all their paperwork taken on your phone or printed and kept in safe place.
- ▶ Have current photos of your pet in the event they go missing.
- ▶ Have your pet microchipped and use your cell phone number for a contact number.
- ▶ Plan with your vet to have your pet treated in an emergency and give them the name of the person who is sitting for you.
- ▶ Get references and speak with the clients directly to ask questions. Take tours of facilities that offer boarding to ensure you see in person the place your pet will be staying in.
- ▶ If your pet has medication or special food, make sure you provide enough to use during your trip and detailed instructions on how to administer or feed.



Finding the best care for your pet while you are gone is worth every penny in peace of mind.

BY KAREN SPARAPANI, EXECUTIVE DIRECTOR

The best home to be in is your own.



Whether you are looking for someone to help an aging parent a few hours a week or need more comprehensive assistance, Home Instead can help.

Home Instead CAREGivers™ can provide a variety of services. Some include:

- Personal Care
- Memory Care
- Meals & Nutrition
- Transportation
- Household Duties
- Respite Care
- Hospice Care Support
- Care Management

Call today for an assessment and consultation with a Nurse Care Manager

414.239.9612



To us, it's personal.

HomeInstead.com/315

Each Home Instead Senior Care® franchise office is independently owned and operated. © 2019 Home Instead, Inc.

SENIORS

Fresh
TRUE
TO
YOU

Magazine - quality photography

www.boutiquephotographer.com

PROFESSIONAL TREE CARE
414.355.3420 | MMTreeCare.com

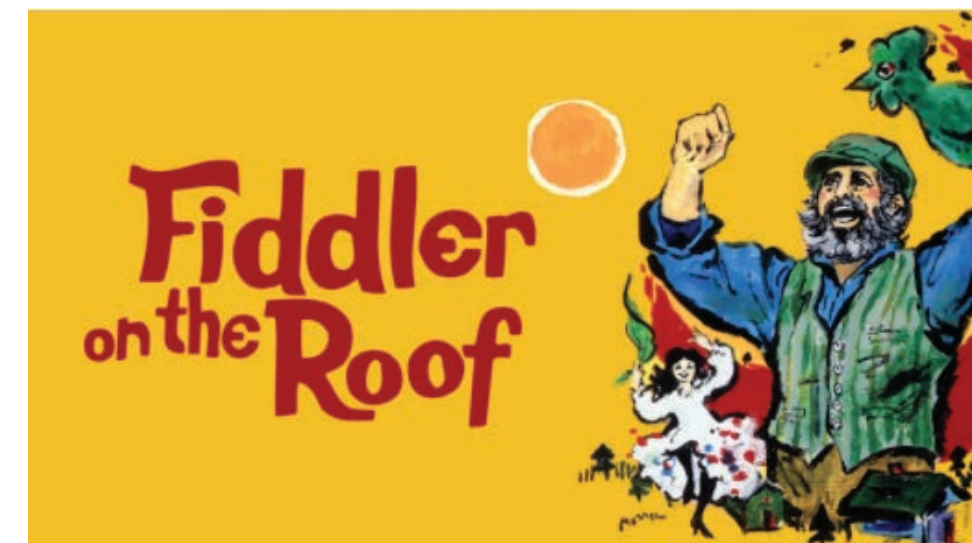
- ROOFING
- SIDING
- GUTTERS
- ATTIC INSULATION
- VENTING SOLUTIONS

414.376.5568 | WWW.ACTESLLC.COM
RESIDENTIAL & COMMERCIAL

FAIR AND SQUARE
CUSTOM REMODELING LLC

jsieberg@me.com • 414 688 4738

School District



Whitefish Bay High School Presents Fiddler on the Roof

- ▶ **When:** 7:00 p.m. on March 4, 5, 11 and 12, and 2:00 p.m. on March 6
- ▶ **Where:** Whitefish Bay High School Auditorium
- ▶ **Ticket Information:** wfbhstheater.com

Save the Date!

- ▶ **March 18-25:** Spring Break

New to the District? 2022-23 Enrollment Information

- ▶ Families who are new to the District for the 2022-23 school year should contact their school about enrolling for the upcoming academic year. Visit wfbschools.com for school contact information.



Whitefish Bay
SCHOOL DISTRICT
An Exceptional Place to Learn

BY JULIE PITEL, EXECUTIVE ASSISTANT TO THE SUPERINTENDENT

ANDRUS
VIP TRANSPORTS

Consider A NEW Dine-In Option!
Grab Your Friends, Order Out,
Curbside Pick-Up In Style!

Traditional Limo | Mercedes Sprinter
Luxury 27-Passenger Coach Bus

ANDRUS VIP Transports | 414.445.5060
www.andruslimo.com

SATURDAY, APRIL 2, 2022



COME CELEBRATE spring at the North Shore Kiwanis Pancake Breakfast with the Bunny on Saturday, April 2, 8:00 to 11:00 a.m. The event will take place at Dominican High School, 120 E. Silver Spring Drive, Whitefish Bay.

Enjoy taking photos with the Bunny, raffles and a delicious breakfast featuring pancakes, sausage, juice, milk & coffee. Tickets are available at the door, from Kiwanis members or at Winkie's Variety Store—\$8 per adult (10 & up) and \$5 per child (over 2 years of age).



Kiwanis is a global organization of volunteers dedicated to changing the world, one child and one community at a time. All proceeds will benefit Kiwanis youth charities.

BY BOB KATTMAN

Winter Brings Out the Best In Us

THE WHITEFISH BAY GARDEN CLUB is committed to growing a greener village, one garden at a time. Native plants, like milkweed, are especially useful in their ability to attract beautiful butterflies and other beneficial insects. Milkweed plants love our winters because they need a period of deep sleep in order to grow.

Home gardeners can replicate Mother Nature's strategy through a process known as stratification. Simply, it means creating similar conditions to what nature provides.

The easiest way to stratify your seeds indoors is to store them in a cold place in plastic bags, spread on top of damp paper towels for several weeks before planting

them. The seeds can be planted indoors in seed starting formula in early March and placed under a light source. When it is time to plant outdoors, they can be easily transplanted.

Last year, to support our pollinators, our garden club members grew and distributed 158 milkweed seedlings to 60 Village households. Our current project is geared toward Junior Gardeners. We are offering our first Winter Fairy Garden Make and Take class for ages 5 to 8 through the WFB Recreation Department. We hope you can join us for some winter gardening fun!

BY CAROLYN HAIGHT, PHOTOS BY EMILY BYRNES



Custom framing memories for The Northshore for 28 Years!

The Great Frame Up gallery
of Whitefish Bay

517 E. Silver Spring Drive
Whitefish Bay, WI 53217
(414) 962-4889

www.tgfufwb.com

Proudly owned and operated by Thomas D. Harris

M-F 10am - 6pm
Sat 10am - 5pm
Sun 12pm - 4pm

WE PRINT!
Now offering printing services on canvas and paper!

15% OFF
Custom Framing
Discount on Custom Framing Materials
Expires 3-31-22
Not valid with any other promotions.
Must present coupon when placing order.

facebook.com/tgfufwb
instagram.com/thegreatframeupwb

Imagine your home, totally organized!

40% off Plus
Free Installation

PLUS TAKE AN EXTRA **15% off**

Terms and Conditions: 40% off any order of \$1000 or more or 30% off any order of \$700-\$1000 on any complete custom closet, garage, or home office unit. Take an additional 15% off on any complete system order. Not valid with any other offer. Free installation with any complete unit order of \$600 or more. With incoming order, at time of purchase only. Expires in 30 days.

SPECIAL FINANCING FOR 18 MONTHS
With approved credit. Call or ask your Designer for details.
Not available in all areas.

Closets, Garages, Home Offices and more.
Call for a free in home design consultation and estimate
262-239-4502 BVM
www.closetsbydesign.com

Closets byDesign

H F HOLY FAMILY
DREAM | BELIEVE | ACHIEVE | LEAD

NOW REGISTERING
for 2022-23
Grades K3 — Grade 8

4849 N. WILDWOOD AVE. WHITEFISH BAY
414.332.8175 | WWW.HFPARISHSCHOOL.ORG
Admissions/Tours: 414.332.8175, ext. 134 | brienzak@hfparishschool.org

BAY VIEW BARK
Smart for you, fun for your dog

DAY CARE
OVERNIGHT CARE
TRAINING CLASSES

1820 S. 1st St. Mke, WI 53204 • 414.763.1304 • bayviewbark.com

BrightStar Care
HOME CARE | MEDICAL STAFFING
A Higher Standard

BrightStar Care of
Central & South Milwaukee
414-944-0280

Learn more at
brightstarcare.com/central-milwaukee
©BrightStar Care Independently Owned and Operated

A nurse on your side makes the difference.
When your loved one needs extra care at home, choosing the right caregiver agency can be tough. Let BrightStar Care® make it easier.

- Companion, personal & skilled care
- No minimum hours
- Medication management
- Specially trained caregivers
- Fully screened, bonded & insured
- Respite care & family relief

PENDING

Address	List Price
5115 N Kent Ave.	\$259,900

SOLD

Address	List Price	Sold Price	Address	List Price	Sold Price
5148 N Lydell Ave	\$279,000	\$270,000	5577 N Kent Ave	\$365,000	\$357,500
4865 N Larkin St	\$300,000	\$315,000	349 E Day Ave	\$379,900	\$391,000
5664 N Lydell Ave	\$300,000	\$300,000	5144 N Ardmore Ave	\$399,900	\$390,000
5854 N Bay Ridge Ave	\$399,000	\$410,000	711 E Lake View Ave	\$569,900	\$585,000
4639 N Larkin St	\$464,900	\$490,000	4837 N Woodburn St	\$665,000	\$665,000
4759 N Larkin St	\$839,900	\$876,500	928 E Colfax Pl	\$825,000	\$850,000
5069 N Cumberland Blvd	\$279,000	\$267,440	5552 N Berkeley Blvd	\$869,900	\$850,000
5026 Idlewild Ave	\$349,000	\$390,000	4614 N Cramer St	\$1,285,000	\$1,376,000

Best Version Media does not guarantee the accuracy of the statistical data on this page. The data does not represent the listings of any one agent or agency but represents the activity of the real estate community in the area. Any real estate agent's ad appearing in the magazine is separate from the statistical data provided which is in no way a part of their advertisement.



WHITEFISH BAY LIBRARY

MARCH 25 IS J.R.R. TOLKIEN READING DAY, a day first organized by the Tolkien Society in 2003 to encourage fans to celebrate and promote Tolkien's life and works. With Amazon producing a show based on Tolkien's work set to premiere sometime this fall, interest in Tolkien will only continue to grow. If you are already a Tolkien and fantasy fan, here are some titles that may have you staying up late to read just one more page.



The Fifth Season by N.K. Jemisin

Every few hundred years, the dwellers of the continent Stillness must face the "Fifth Season," a time filled with catastrophic climate change. The three books in this series made Jemisin the first author to win the Hugo Award for Best Novel in three consecutive years.

The Grace of Kings by Ken Liu

Welcome to the Dandelion Dynasty. Two friends team up against the ruling emperor. After the fall, the friends find themselves on opposing sides. This novel is set in a period similar to the unification of China in the 221 BC. It's fun to see real Chinese inventions including exploding powder for firecrackers play a role.

A Wizard of Earthsea by Ursula Le Guin

Le Guin is one of the fantasy greats and Earthsea was originally published in 1968. The story follows Ged, a great sorcerer. Ged learns about his powers at the wizarding school Roke. In his quest for power he releases a shadow. Can Ged stop the shadow before it devours the land?

BY SCOTT LENSKI, HEAD OF ADULT SERVICES

WHITEFISH BAY'S REAL ESTATE TEAM

SOLD Homes in Whitefish Bay by Volume in 2021

*Per MLS Stats 01/01/2021 - 12/31/2021



Janine Werner, Jay Schmidt, Jordan Lukach and Danielle Forrest

JSG HELPED
63 FAMILIES
IN WHITEFISH BAY!



JSGmke.com

CONNECT TODAY TO GET THE PROCESS STARTED!

414.517.7716

MAKE YOUR SHOWPLACE CABINETRY DREAMS COME TRUE!

- YOUR START WITH THE FINISHES PLACE -
Styles, finishes, woods, accessories, and accents from classic to contemporary. Impressive design combinations limited only by our imaginations.

ZUERN

BUILDING PRODUCTS & DESIGN CENTER

WWW.ZUERN.COM

Scan the QR code to virtually visit our Cedarburg Showroom now!

Our four expansive showrooms are open to the public!
ALLENTON | CEDARBURG | FRANKLIN | WATERTOWN

Calendar of events March 2022

**ONGOING
SLICE OF ICE**
@Red Arrow Park
Experience ice skating downtown, a Milwaukee tradition. Check the website for more information on rates and operations.
county.milwaukee.gov/EN/Parks/Explore/Slice-of-Ice

**ONGOING
SOCIAL DISTANCED WALKING**
@Lynden Sculpture Garden
Enjoy a walk and art as you stroll through the sculpture garden free of charge thanks to the Herzfeld Foundation.
Time: 10am-5pm
www.lyndensculpturegarden.org

**SATURDAYS, ONGOING
MILWAUKEE WINTER MARKET**
@GATHER at Deer District
The 13th season of the Milwaukee Winter Farmers Market (MWF) begins in an exciting new location! It's the same great market!
Time: 8:00am-11:30
Cost: Free
www.mcwfm.org

**SUN., MARCH 6
BRIDAL EXPO**
@Sheraton Milwaukee Brookfield Hotel
The number one luxury bridal show and expo for more than 30 years, come experience everything new and trending in weddings. Shop in style, find amazing discounts/deals from participating wedding professionals.
Time: 10:30am-4pm
Cost: up to 4 free tickets free eventbrite.com

**THURS.,-SUN., MARCH 10-13
JOURNAL SENTINEL SPORTSSHOW**
@Wisconsin State Fair Expo
Back for its 81st year - with new and returning activities. Meet with experts and pros and explore what's new in hunting, fishing and travel.
Time: 10am-8pm, Sun. 10am-5pm
Cost: \$12
jssportsshow.com

**SAT., MARCH 12
ST. PATRICK'S DAY PARADE**
@Downtown
The Shamrock Club of Wisconsin & Westtown Association look forward to gathering with our friends, families & neighbors for the 54th Shamrock Club of Wisconsin St. Patrick's Day Parade.
Time: 11am
Cost: Free
saintpatricksparade.org

**SAT., MARCH 19
MAPLE SYRUPIN'**
@Catholic Ecology Center
Come and learn all about the amazing art and ecology of maple syrupin' in WI. Maples will be tapped and a fire will be boiling off the sap into syrup outside; taste testing encouraged with unlimited sampling! Maple syrup will be available for purchase.
Time: 11am-3pm
Cost: \$5-8
www.catholicecologycenter.org

**SAT., MARCH 26
WEAVING WORKSHOP**
@Catholic Ecology Center
Spend a cozy morning with friends learning The Joyful Art of Loom Weaving. In this new 2.5-3 hour women's workshop we will be learning how to weave a small wall tapestry. All supplies will be provided. Take home your very own piece of art and teach your friends!
This workshop is designed for beginner to intermediate, adults and teens.
Time: 9:30am-12:30pm
Cost: \$30-38
www.catholicecologycenter.org

Event details may change at any time, always check with the event organizer when planning to attend this event or purchase tickets. Be prepared to follow local health and safety guidelines.



Discovering 5715 NORTH LAKE DRIVE

One of the rewards of researching Whitefish Bay's historic homes is discovering where some of the Village's early small business leaders lived. While the Bay has been home to its share of Milwaukee tycoons, it is the local merchants who shape our memories of our community.

One home that illustrates this is the colonial revival residence built in 1928 at 5715 N. Lake Drive. Constructed of cream city brick on a trapezoidal-shaped lot, the structure was the home for three local businessmen.

George C. and Elva Sullivan first built a home at 127 E. Day Avenue in 1927 before constructing a second house on Lake Drive and relocating in 1929. Sullivan was the owner of Shellenberger-Gregg Co., which sold heating oil to homeowners and businesses. Sullivan operated the business out of his Lake Drive home. It may be why the lot includes an unusually large

three-and-a-half-stall garage, also made of cream city brick and built in 1928. The family lived in the house until 1952.

Joseph A. and Ruth M. Dragotto lived in the home from 1952 to 1968. They were the owners of Dreyer Meyer, a woman's intimate apparel shop on Silver Spring Drive and other locations.

From 1968 to 1989 Marvin G. and Betty Jane Holprin lived in the home. He was president of American Produce Distributors which provided fruits and vegetables to A&P and other local grocers, restaurants and residential facilities.

The Whitefish Bay Historic Preservation Commission in November placed the home on the Village's Architecture and Historic Inventory. In recognition, a medallion will be placed on the sidewalk in front of the home later this year.

BY JEFF AIKIN

Thanks for Your Past Business

North Shore's Premier Auto Repair Facility

Now in our 40TH year

Save \$100! Bonus Discount	
SPEND THIS	SAVE THIS
\$100-\$199	SAVE \$15
\$200-\$299	SAVE \$20
\$300-\$399	SAVE \$30
\$400-\$499	SAVE \$40
\$500-\$599	SAVE \$50
\$600-\$699	SAVE \$60
\$700-\$899	SAVE \$75
\$900 or more	SAVE \$100

Coupons must be presented at time of write up. Expires 3/31/22.

Ultra Oil Change & Filter

\$29.95

Includes 22 Point Inspection

Up to 5 quarts on most cars, 5W20 or 5W30. Synthetic oil & special filters extra. Plus environmental fee. By appointment only. No other discount applies. Expires 3/31/22.

We'll repair your car for less! FAST! Fixed Right the First Time!

SILVER SPRING AUTOMOTIVE, INC.

2003 W. Bender Road, Glendale, 53209
2 blocks west of Green Bay Ave, Speedway & The Green 7

414-351-5080
silverspringautomotive.com

Fast 24 Hour Towing Available
Dave's Towing • 414 491-2587

Stay in. And go out.

LANDCRAFTERS

414-897-8232 Landcrafterslandscaping.com

The spring market starts now!

TARPEY FRANZ TEAM

Success is all in the preparation. It's doing the right things, in the right way, at the right time. We'll guide you every step of the way.

DAWN TARPEY | 414.426.8556
GAYL FRANZ | 414.403.3600

TARPEY FRANZ TEAM
elsafy real estate

ShoreWEST REALTORS

tarpeyfranzteam.shorewest.com

UNCONVENTIONAL

WAYS TO MARK YOUR MILESTONES

The last two years have presented big challenges in creating memories around special events like milestone birthdays, retirements, and weddings. How have the venues of the Wisconsin Center District (WCD) – owners and operators of the Wisconsin Center, Miller High Life Theatre, and UW-Milwaukee Panther Arena – risen to the challenge of making these memories come to life in the safest way possible?

“Our COVID mitigation strategies throughout each building, including fresh air exchange and hundreds of thousands of square feet of open space, are our superpower,” said Megan Seppmann, Vice President of Sales for the WCD. “We already work under the mantra of Be Bold. Be Proud. Be Experience Obsessed. Applying those values to creating safe, unique event spaces gives us the chance to really be available to our clients.”

While locals may not often think of a convention center, theater, or arena for hosting a private event, the venues of the WCD provide unique, creative backdrops that turn an average event into something truly memorable.

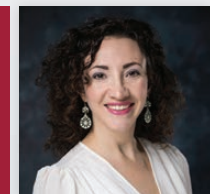
“My favorite recent private event was a phenomenal 800-person wedding reception we recently hosted in the ballroom of the Wisconsin Center,” said Katie Ragan, Senior Account Manager for the WCD. “The bride and groom had an all-night open-house, including unique food stations all evening, to keep their guests guessing at what was next. On paper the attendee list was long, but in 37,500 square feet, there was plenty of room for everyone to stay physically distanced while socially together.”

Most recently the Wisconsin Center completed the second extension of Beyond Van Gogh: The Immersive Experience. After an incredible six-month run, the Wisconsin Center welcomed more than 200,000 attendees through its doors to participate in this one-of-a-kind immersive experience.

“Bringing a client’s vision to life isn’t just my job, it’s my passion,” said Ragan. “Whether it’s a bride descending down the grand staircase of the Miller High Life Theatre, or a late-night celebration lighting up downtown in the Atrium of the Wisconsin Center, I have never felt more excitement and desire to mark special milestones in a big way from our clients!”

Ragan says she is booking corporate and private parties now through 2022. For more information and to curate your own unconventional event, email her at kragan@wcd.org.

ASK THE EXPERT



BY SARAH MAIO

BIG

BOLD

Events

AT THE WISCONSIN CENTER,
THE UWM PANTHER ARENA,
& MILLER HIGH LIFE THEATRE

For your next big social event
contact Katie Ragan
414-840-9245
KRAGAN@WCD.ORG



Party Design: Dynamic Events by David Caruso

Whitefish Bay Summer Recreation Guide Delivered to Homes in March

The anticipated Summer Recreation Guide filled with summer youth and adult opportunities in recreation, exercise and sports is scheduled for delivery in March. Summer programs fill up fast, so please don't wait to register!

Summer Youth Work and Volunteer Recruitment

The summer of 2022 Bay Volunteer and Counselor-In-Training program is accepting applicants. Youth interested in the Bay Volunteer program must be entering Grade 9 in 2022 to be eligible. The Counselor-in-Training (CIT) program is geared toward incoming High School 2022 Seniors. CIT's are paid training positions. If you are a teen and love working with kids, we need you! Application packets can be found online at www.wfbschools.com. Application deadline is April 1, 2022.

Connects Before & Afterschool Care Registration Begins for 2022-2023

On April 14, 2022, families can begin to register for Connects for the 2022-2023 school year. Registration packets may be picked up at Richards and Cumberland Schools, the Lydell Community Center or downloaded from our website: www.wfbschools.com. Please register quickly if you need to secure care for the upcoming school year.

Whitefish Bay Community Garden

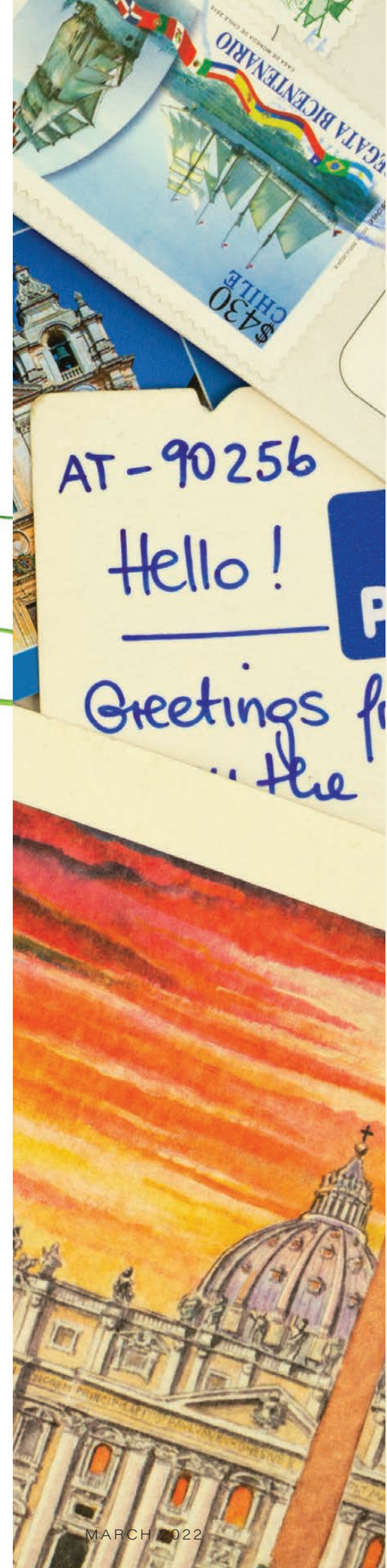
The Whitefish Bay Community Garden is looking for volunteers, donors and sponsors. If you are interested in getting involved, please contact Megan Kuehn at megan.kuehn@wfbschools.com or call 414-963-3947.

Whitefish Bay Rec Sports Sponsors Wanted!

Whitefish Bay Residents, show your support through sponsorship of our youth sports programs. We are currently seeking sponsors for our 2022 Tee-Ball and Coach Pitch Leagues.

Join the fun today! Contact Mark in the Recreation Department at 414-963-3864 for more information.

BY CARIN KELAND, DIRECTOR OF RECREATION AND COMMUNITY EDUCATION



KEEPING SAFE At Your Home Away From Home

WITH WINTER (very) slowly pulling into our rearview mirror, we are thinking about warmer days ahead. Some of us may even be thinking about a Spring Break getaway as a chance to recharge and spend some time away with those we love. Vacationing should be a time of relaxation and enjoyment, but safety should also always be at the forefront of our mind.

When thinking about picking a place to stay on vacation, the National Fire Protection Agency along with the Consumer Product Safety Commission and the Neighborhood Safety Network offer some great tips to think about before and during your trip:

Before you go:

- ▶ **Research** the accommodations. Know what their safety plans look like and whether they are properly equipped with smoke and carbon monoxide alarms at a minimum on every level and inside and outside of every sleeping area.
- ▶ **Confirm** that there is a fire extinguisher readily available near your hotel room or within the vacation home if you are renting an entire home.
- ▶ **Check** out what their pool safety plan is if there is a swimming pool. Is the pool surrounded by a lockable gate to ensure the safety of children who may be traveling with you? Whenever possible ensure all able travelers know how to swim.

Once you arrive:

- ▶ **Familiarize** yourself with the exit/escape plan for the accommodations. Consider practicing a "fire drill" with your travel party so that everyone is aware of the safest and quickest ways out of the structure and pre-determine what your group's meeting place will be.
- ▶ **Avoid** deadly tip overs. Never let your children climb on furniture.
- ▶ **Keep** all window cords out of reach of children and ensure that the sleep space for any baby's traveling with you is safe. Request a crib or pack n' play from the accommodations or bring one with you if possible. Ensure that any sleeping arrangements meets the standards of the Consumer Product Safety Commission by looking for their logo.
- ▶ **Protect** children traveling with you by being aware of the potentially deadly gap between inner and outer elevator doors. Never let children ride the elevator alone.
- ▶ **Always ensure** adult supervision around the water (pools or lakes) and keep kids away from swimming pool drains.
- ▶ **Know** how to perform CPR on children and adults.

Following these tips can help ensure an enjoyable getaway for you and your family. For more safety tips and information, please visit our website, www.nsfire.org.



BY BATTALION CHIEF DAN TYK

CFAI logo printed with permission.

MILWAUKEE'S LEADER IN EYEWEAR FASHION SINCE 1989



2567 N Downer Ave. Milwaukee
414-964-3125
M-W-F 10am-6pm;
T-TH 10am-7pm; SAT 9am-4pm
Offering same day service on many eyeglass prescriptions

OPTOMETRISTS:
Brian McGinley O.D. | Camthu Pham O.D.

- ▶ Accepting most eye insurances
- ▶ Latest exam technology and Contact Lens fittings
- ▶ Convenient Appointment Times



OPTIXONDOWNER.COM



1 on 1 Customized Care in your Home

100% of our staff are fully vaccinated for COVID

Call for a **FREE** nurse assessment 262-365-1443

Home Care:

- Personal hygiene, bathing, dressing, medication reminders, meal preparation, housekeeping, companionship, and more.
- Alzheimer's/Dementia care - our new Memory at Home program brings Certified Dementia Specialists to you!

Skilled Nursing Care

- Medication management, wound care, ostomy/colostomy care, post-op care, catheter care, vital sign monitoring, care management, injections, and more.



Owners:
Laura Bireley, RN
Tim Bireley

www.homehelpershomecare.com info@homehelpershomecare.com

Each office is independently owned & operated

A new garage door can make a big difference.

CUSTOM GARAGE DOORS THAT FIT YOUR HOME'S UNIQUE STYLE.



J.D. Griffiths is the oldest, largest, and most experienced garage builder, door provider, and servicer in Milwaukee. We've been building and renovating garages for more than 3 generations. We mean it when we say, for your garage needs, we've got you covered!

J.D. Griffiths
www.jdgriffiths.com | (414) 362-7222



A TRADITION OF EXCELLENCE SINCE 1947

EXPERIENCE LIFE WITH *Great Vision*

CHRISTINA PETROU, O.D.
35 Years Experience in Eye Care



- Detailed Eye Health and Vision Exams for All Ages
- Custom Glasses and Contact Lens Evaluations
- Experienced Team of Eye Wear Stylists
- Specializing in Optical Consulting for All Vision and Eye Problems, Including:
 - Red, Irritated or Dry Eyes
 - Eye Strain or Headaches
 - Blur due to:
 - Macular Degeneration
 - Autoimmune Disease
 - Cataracts
 - Glaucoma
 - Diabetes



Petrou Eye Care | petroueyecare.com
414.247.2020 | Glendale



LET'S GET OUT THE CRYSTAL BALL

There is no question that 2021 was an exciting year in the real estate market. Overall home prices were up 12% in Whitefish Bay according to the Multiple Listing Service (MLS). That's the highest single-year value increase in my 24 years as a Realtor. Many homeowners sold their home in days and achieved prices above their asking price. It's great news for all of us Whitefish Bay homeowners!

The "exuberance" of 2021 was driven by the convergence of 2 key factors:

- ▶ **Low inventory** – the number of folks moving is historically low.
- ▶ **High buyer demand** – driven by low interest rates and a strong stock market.

Enter 2022 with persistently low inventory, climbing interest rates, rising inflation, covid uncertainty, and more employers making work from home a legitimate option. How will these factors impact prices this year? It's hard to say. For example, one might think that higher interest rates will take buyers out of the market. Alternatively, the opposite might happen. Even more buyers might want to lock-in a great rate before the cost of money goes even higher.

That's just one paradox of this market. Just when you think prices can't get any higher - they do. And just when you might think any home, at any price, in any condition will sell - it doesn't. The truth is no one is quite certain what the market is going to do in 2022. Our crystal balls are a bit foggy!

A panel of economists gathered by the National Association of Realtors predicts that price appreciation will taper to 5.7%, interest rates will continue to rise above 4%, and inflation will ease. So, what does that mean for you and me? I say, not too much.

While economic conditions are important, I recommend that real estate decisions should be made based on what's happening in your life. Real estate decisions should be governed by life events. Getting married, having more children, getting a job promotion, retiring, upsizing, downsizing, right sizing, etc. That's what should influence the decision to either buy or sell. Making the right life decision matters far more than the current interest rate.

There is no question that the playing field is currently tipped to the advantage of sellers. But a word of caution if you're getting ready to sell your home this spring. Buyers are smart, informed, and selective. Despite it being a strong seller's market, you must still prepare the right way, price correctly, and be strategic about how your home is positioned relative to your competition. Get these things right and you'll have great success. Miscalculate and you might miss a wonderful opportunity to maximize the selling price. A good Realtor will coach you the right way.



ASK THE EXPERT

BY ESSAM ELSAFY,
SHOREWEST REALTORS

THINKING ABOUT SELLING?

©Shorewest, REALTORS® EHO 2022NS



Let's chat now

Essam Elsafy

414-350-4611

elsafyteam@shorewest.com

